

Recombinant

DGRmAb®

SH2B3 (DGR34422) Rabbit mAb

db12079

Package : 10µL 20µL 50µL 100µL

Product Name : SH2B3 (DGR34422) Rabbit mAb**Cat.No.:** db12079**Synonyms** : LNK; IDDM20**Application** : WB**Reactivity** : Human**Host species** : Rabbit**Background**

This gene encodes a member of the SH2B adaptor family of proteins, which are involved in a range of signaling activities by growth factor and cytokine receptors. The encoded protein is a key negative regulator of cytokine signaling and plays a critical role in hematopoiesis. Mutations in this gene have been associated with susceptibility to celiac disease type 13 and susceptibility to insulin-dependent diabetes mellitus. Alternatively spliced transcript variants encoding different isoforms have been found for this gene. [provided by RefSeq, Apr 2014]

Immunogen

A synthetic peptide of human SH2B3

Gene ID

10019

Swiss Prot

Q9UQQ2

Synonyms

LNK; IDDM20

Reactivity

Human

Application

WB

Recommended dilution

WB: 1:1000-1:5000

Calculated MW

63 kDa

Observed MW

63 kDa

Host species

Rabbit

Clonality

Monoclonal

Clonality No.

DGR34422

Isotype

IgG

Purity

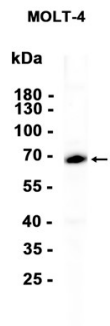
Affinity Purification

Conjugation

Un-conjugated

Storage Stability

Store at -20°C. Supplied in 50mM Tris-Glycine(pH 7.4), 0.15M NaCl, 40% Glycerol, 0.01% sodium azide and 0.05% BSA. Stable for 12 months from date of receipt.



Western blot analysis of extracts from MOLT-4 cells using db12079 at 1:1000.