

Recombinant

DGRmAb®

EZH2 (DGR16511) Rabbit mAb

db12083

Package : 10µL 20µL 50µL 100µL

Product Name : EZH2 (DGR16511) Rabbit mAb**Cat.No.:** db12083**Synonyms** : WVS; ENX1; KMT6; WVS2; ENX-1; EZH2b; KMT6A**Application** : WB, IP**Reactivity** : Human**Host species** : Rabbit**Background**

This gene encodes a member of the Polycomb-group (PcG) family. PcG family members form multimeric protein complexes, which are involved in maintaining the transcriptional repressive state of genes over successive cell generations. This protein associates with the embryonic ectoderm development protein, the VAV1 oncoprotein, and the X-linked nuclear protein. This protein may play a role in the hematopoietic and central nervous systems. Multiple alternatively spliced transcript variants encoding distinct isoforms have been identified for this gene. [provided by RefSeq, Feb 2011]

Immunogen

A synthetic peptide of human EZH2

Gene ID

2146

Swiss Prot

Q15910

Synonyms

WVS; ENX1; KMT6; WVS2; ENX-1; EZH2b; KMT6A

Reactivity

Human

Application

WB, IP

Recommended dilutionWB: 1:1000
IP: 1:20-1:50**Calculated MW**

85 kDa

Observed MW

98 kDa

Host species

Rabbit

Clonality

Monoclonal

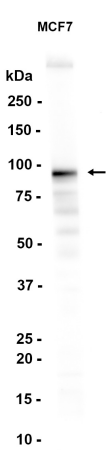
Clonality No.

DGR16511

Isotype

IgG

Purity	Affinity Purification
Conjugation	Un-conjugated
Storage Stability	Store at -20°C. Supplied in 50mM Tris-Glycine(pH 7.4), 0.15M NaCl, 40% Glycerol, 0.01% sodium azide and 0.05% BSA. Stable for 12 months from date of receipt.



Western blot analysis of extracts from MCF-7 cells using db12083 at 1:1000.