

Recombinant

DGRmAb®

ETS2 (DGR18256) Rabbit mAb

db12322

Package : 10µL 20µL 50µL 100µL

Product Name : ETS2 (DGR18256) Rabbit mAb**Cat.No.:** db12322**Synonyms :** ETS2IT1**Application :** WB, IHC-P, ICC/IF, IP**Reactivity :** Human,Mouse,Rat**Host species :** Rabbit**Background**

This gene encodes a transcription factor which regulates genes involved in development and apoptosis. The encoded protein is also a protooncogene and shown to be involved in regulation of telomerase. A pseudogene of this gene is located on the X chromosome. Alternative splicing results in multiple transcript variants. [provided by RefSeq, Jan 2012]

Immunogen

Recombinant protein of human ETS2

Gene ID

2114

Swiss Prot

P15036

Synonyms

ETS2IT1

Reactivity

Human,Mouse,Rat

Application

WB, IHC-P, ICC/IF, IP

Recommended dilutionWB: 1:1000
IHC-P: 1:200-1:500
ICC/IF: 1:200-1:500
IP: 1:20-1:50**Calculated MW**

53 kDa

Observed MW

53 kDa

Host species

Rabbit

Clonality

Monoclonal

Clonality No.

DGR18256

Isotype

IgG

Purity

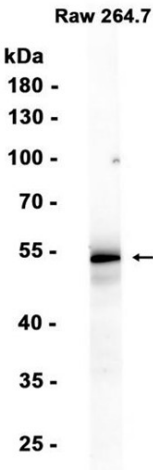
Affinity Purification

Conjugation

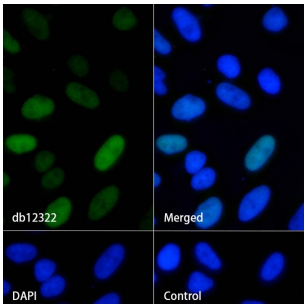
Un-conjugated

Storage Stability

Store at -20°C. Supplied in 50mM Tris-Glycine(pH 7.4), 0.15M NaCl, 40% Glycerol, 0.01% sodium azide and 0.05% BSA. Stable for 12 months from date of receipt.



Western blot analysis of extracts from RAW264.7 cells using db12322 at 1:1000.



Immunofluorescence analysis of HeLa cells labelling ETS2 with db12322.

The cells were fixed with 4% PFA (10min, RT) followed by treatment with 0.1% Triton X-100 (10min, RT), and blocked in 1% BSA/10% normal goat serum/0.3M glycine in 0.1% PBS-Tween 20 for 1h. The cells were then incubate with db12322 (1:200) at room temprature for 1h, followed by a further incubation at room temperature for 45min with Goat Anti Rabbit IgG (H+L)-AF488 (db10005, shown in green). Nuclear DNA was labeled in blue with DAPI.

Control: Secondary antibody only.