

Recombinant

DGRmAb®

EphB2 (DGR19680) Rabbit mAb

db12324

Package : 10µL 20µL 50µL 100µL

Product Name : EphB2 (DGR19680) Rabbit mAb**Cat.No.:** db12324**Synonyms** : DRT; EK5; ERK; CAPB; Hek5; PCBC; EPHT3; Tyro5; BDPLT22**Application** : WB, IHC-P**Reactivity** : Human,Mouse,Rat**Host species** : Rabbit**Background**

This gene encodes a member of the Eph receptor family of receptor tyrosine kinase transmembrane glycoproteins. These receptors are composed of an N-terminal glycosylated ligand-binding domain, a transmembrane region and an intracellular kinase domain. They bind ligands called ephrins and are involved in diverse cellular processes including motility, division, and differentiation. A distinguishing characteristic of Eph-ephrin signaling is that both receptors and ligands are competent to transduce a signaling cascade, resulting in bidirectional signaling. This protein belongs to a subgroup of the Eph receptors called EphB. Proteins of this subgroup are distinguished from other members of the family by sequence homology and preferential binding affinity for membrane-bound ephrin-B ligands. Allelic variants are associated with prostate and brain cancer susceptibility. Alternative splicing results in multiple transcript variants. [provided by RefSeq, May 2015]

Immunogen

Recombinant protein of human EphB2

Gene ID

2048

Swiss Prot

P29323

Synonyms

DRT; EK5; ERK; CAPB; Hek5; PCBC; EPHT3; Tyro5; BDPLT22

Reactivity

Human,Mouse,Rat

Application

WB, IHC-P

Recommended dilution

WB: 1:1000-1:5000

IHC-P: 1:200-1:1000

Calculated MW

118 kDa

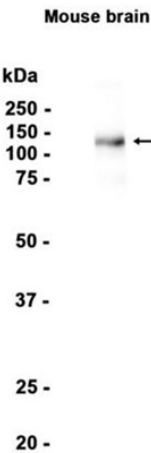
Observed MW

130 kDa

Host species

Rabbit

Clonality	Monoclonal
Clonality No.	DGR19680
Isotype	IgG
Purity	Affinity Purification
Conjugation	Un-conjugated
Storage Stability	Store at -20°C. Supplied in 50mM Tris-Glycine(pH 7.4), 0.15M NaCl, 40% Glycerol, 0.01% sodium azide and 0.05% BSA. Stable for 12 months from date of receipt.



Western blot analysis of extracts from Mouse brain tissue using db12324 at 1:1000.