

Recombinant

DGRmAb®

## CCN1 (DGR16698) Rabbit mAb

db12343

Package : 10µL 20µL 50µL 100µL

**Product Name** : CCN1 (DGR16698) Rabbit mAb**Cat.No.:** db12343**Synonyms** : GIG1; CYR61; IGFBP10**Application** : WB, ICC/IF, FC, IP**Reactivity** : Human**Host species** : Rabbit**Background**

The secreted protein encoded by this gene is growth factor-inducible and promotes the adhesion of endothelial cells. The encoded protein interacts with several integrins and with heparan sulfate proteoglycan. This protein also plays a role in cell proliferation, differentiation, angiogenesis, apoptosis, and extracellular matrix formation. [provided by RefSeq, Sep 2011]

**Immunogen**

Recombinant protein of human CCN1

**Gene ID**

3491

**Swiss Prot**

O00622

**Synonyms**

GIG1; CYR61; IGFBP10

**Reactivity**

Human

**Application**

WB, ICC/IF, FC, IP

**Recommended dilution**

WB: 1:1000

ICC/IF: 1:200-1:500

FC: 1:50-1:100

IP: 1:20-1:50

**Calculated MW**

42 kDa

**Observed MW**

42 kDa

**Host species**

Rabbit

**Clonality**

Monoclonal

**Clonality No.**

DGR16698

**Isotype**

IgG

**Purity**

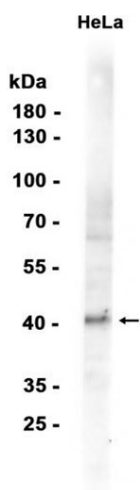
Affinity Purification

**Conjugation**

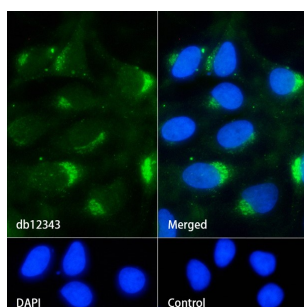
Un-conjugated

**Storage Stability**

Store at -20°C. Supplied in 50mM Tris-Glycine(pH 7.4), 0.15M NaCl, 40% Glycerol, 0.01% sodium azide and 0.05% BSA. Stable for 12 months from date of receipt.



Western blot analysis of extracts from HeLa cells using db12343 at 1:1000.



Immunofluorescence analysis of HeLa cells labelling CCN1 with db12343.

The cells were fixed with 4% PFA (10min, RT) followed by treatment with 0.1% Triton X-100 (10min, RT), and blocked in 1% BSA/10% normal goat serum/0.3M glycine in 0.1% PBS-Tween 20 for 1h. The cells were then incubate with db12343 (1:200) at room temperature for 1h, followed by a further incubation at room temperature for 45min with Goat Anti Rabbit IgG (H+L)-AF488 (db10005, shown in green). Nuclear DNA was labeled in blue with DAPI.

Control: Secondary antibody only.