

Recombinant

DGRmAb®

CDK5 (DGR13878) Rabbit mAb

db12466

Package : 10µL 20µL 50µL 100µL

Product Name : CDK5 (DGR13878) Rabbit mAb**Cat.No.:** db12466**Synonyms :** LIS7; PSSALRE**Application :** WB, ICC/IF, FC, IP**Reactivity :** Human,Mouse,Rat**Host species :** Rabbit**Background**

This gene encodes a proline-directed serine/threonine kinase that is a member of the cyclin-dependent kinase family of proteins. Unlike other members of the family, the protein encoded by this gene does not directly control cell cycle regulation. Instead the protein, which is predominantly expressed at high levels in mammalian postmitotic central nervous system neurons, functions in diverse processes such as synaptic plasticity and neuronal migration through phosphorylation of proteins required for cytoskeletal organization, endocytosis and exocytosis, and apoptosis. In humans, an allelic variant of the gene that results in undetectable levels of the protein has been associated with lethal autosomal recessive lissencephaly-7. Alternative splicing results in multiple transcript variants. [provided by RefSeq, May 2015]

Immunogen

A synthetic peptide of human CDK5

Gene ID

1020

Swiss Prot

Q00535

Synonyms

LIS7; PSSALRE

Reactivity

Human,Mouse,Rat

Application

WB, ICC/IF, FC, IP

Recommended dilution

WB: 1:1000

ICC/IF: 1:50

FC: 1:20

IP: 1:20

Calculated MW

33 kDa

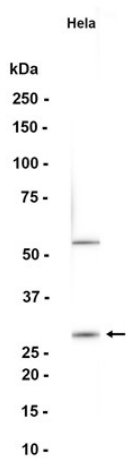
Observed MW

33 kDa

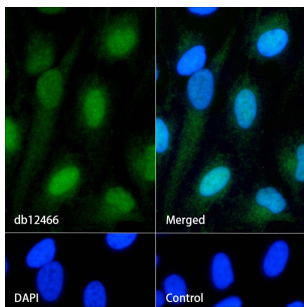
Host species

Rabbit

Clonality	Monoclonal
Clonality No.	DGR13878
Isotype	IgG
Purity	Affinity Purification
Conjugation	Un-conjugated
Storage Stability	Store at -20°C. Supplied in 50mM Tris-Glycine(pH 7.4), 0.15M NaCl, 40% Glycerol, 0.01% sodium azide and 0.05% BSA. Stable for 12 months from date of receipt.



Western blot analysis of extracts from HeLa cells using db12466 at 1:1000.



Immunofluorescence analysis of HeLa cells labelling CDK5 with db12466.

The cells were fixed with 4% PFA (10min, RT) followed by treatment with 0.1% Triton X-100 (10min, RT), and blocked in 1% BSA/10% normal goat serum/0.3M glycine in 0.1% PBS-Tween 20 for 1h. The cells were then incubate with db12466 (1:50) at room temprature for 1h, followed by a further incubation at room temperature for 45min with Goat Anti Rabbit IgG (H+L)-AF488 (db10005, shown in green). Nuclear DNA was labeled in blue with DAPI.

Control: Secondary antibody only.