

Recombinant

DGRmAb®

## STAT1 (DGR15796) Rabbit mAb

db12496

Package : 10µL 20µL 50µL 100µL

**Product Name** : STAT1 (DGR15796) Rabbit mAb**Cat.No.:** db12496**Synonyms** : CANDF7; IMD31A; IMD31B; IMD31C; ISGF-3; STAT91**Application** : WB, IHC-P, FC, IP**Reactivity** : Human**Host species** : Rabbit**Background**

The protein encoded by this gene is a member of the STAT protein family. In response to cytokines and growth factors, STAT family members are phosphorylated by the receptor associated kinases, and then form homo- or heterodimers that translocate to the cell nucleus where they act as transcription activators. This protein can be activated by various ligands including interferon-alpha, interferon-gamma, EGF, PDGF and IL6. This protein mediates the expression of a variety of genes, which is thought to be important for cell viability in response to different cell stimuli and pathogens. Two alternatively spliced transcript variants encoding distinct isoforms have been described. [provided by RefSeq, Jul 2008]

**Immunogen**

Recombinant protein of human STAT1

**Gene ID**

6772

**Swiss Prot**

P42224

**Synonyms**

CANDF7; IMD31A; IMD31B; IMD31C; ISGF-3; STAT91

**Reactivity**

Human

**Application**

WB, IHC-P, FC, IP

**Recommended dilution**WB: 1:1000  
IHC-P: 1:1000-1:5000  
FC: 1:200-1:500  
IP: 1:20-1:50**Calculated MW**

87 kDa

**Observed MW**

87 kDa

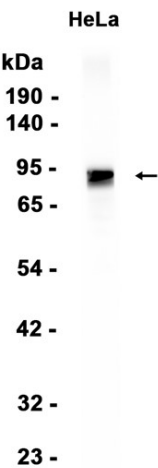
**Host species**

Rabbit

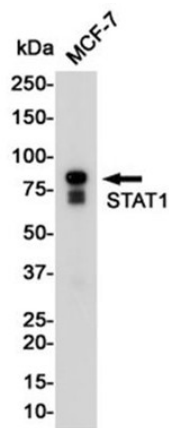
**Clonality**

Monoclonal

Clonality No.	DGR15796
Isotype	IgG
Purity	Affinity Purification
Conjugation	Un-conjugated
Storage Stability	Store at -20°C. Supplied in 50mM Tris-Glycine(pH 7.4), 0.15M NaCl, 40% Glycerol, 0.01% sodium azide and 0.05% BSA. Stable for 12 months from date of receipt.



Western blot analysis of extracts from HeLa cells using db12496 at 1:1000.



Western blot analysis of extracts from MCF-7 cells using db12496 at 1:1000.