

Recombinant

DGRmAb®

Integrin linked ILK (DGR12955) Rabbit mAb

db12535

Package : 10µL 20µL 50µL 100µL

Product Name : Integrin linked ILK (DGR12955) Rabbit mAb**Cat.No.:** db12535**Synonyms** : P59; ILK-1; ILK-2; p59ILK; HEL-S-28**Application** : WB, ICC/IF, FC**Reactivity** : Human,Mouse,Rat**Host species** : Rabbit**Background**

This gene encodes a protein with a kinase-like domain and four ankyrin-like repeats. The encoded protein associates at the cell membrane with the cytoplasmic domain of beta integrins, where it regulates integrin-mediated signal transduction. Activity of this protein is important in the epithelial to mesenchymal transition, and over-expression of this gene is implicated in tumor growth and metastasis. Alternative splicing results in multiple transcript variants. [provided by RefSeq, Jun 2013]

Immunogen

A synthetic peptide of human Integrin linked ILK

Gene ID

3611

Swiss Prot

Q13418

Synonyms

P59; ILK-1; ILK-2; p59ILK; HEL-S-28

Reactivity

Human,Mouse,Rat

Application

WB, ICC/IF, FC

Recommended dilution

WB: 1:2000-1:20000

ICC/IF: 1:200-1:500

FC: 1:100

Calculated MW

51 kDa

Observed MW

51 kDa

Host species

Rabbit

Clonality

Monoclonal

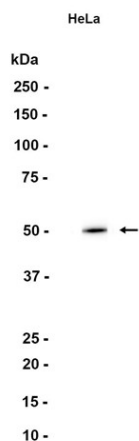
Clonality No.

DGR12955

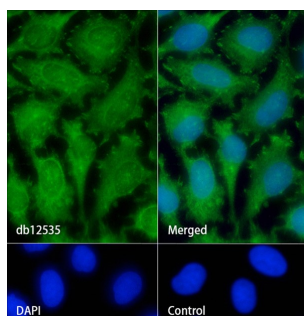
Isotype

IgG

Purity	Affinity Purification
Conjugation	Un-conjugated
Storage Stability	Store at -20°C. Supplied in 50mM Tris-Glycine(pH 7.4), 0.15M NaCl, 40% Glycerol, 0.01% sodium azide and 0.05% BSA. Stable for 12 months from date of receipt.



Western blot analysis of extracts from HeLa cells using db12535 at 1:1000.



Immunofluorescence analysis of HeLa cells labelling Integrin linked ILK with db12535.

The cells were fixed with cold 100% methanol (10min, 4°C) and blocked in 1% BSA/10% normal goat serum/0.3M glycine in 0.1% PBS-Tween 20 for 1h. The cells were then incubate with db12535 (1:200) at room temprature for 1h, followed by a further incubation at room temperature for 45min with Goat Anti Rabbit IgG (H+L)-AF488 (db10005, shown in green). Nuclear DNA was labeled in blue with DAPI.

Control: Secondary antibody only.