

Recombinant

DGRmAb®

CD20 (DGR11675) Rabbit mAb

db12572

Package : 10µL 20µL 50µL 100µL

Product Name : CD20 (DGR11675) Rabbit mAb**Cat.No.:** db12572**Synonyms** : B1; S7; Bp35; MS4A1; CVID5; MS4A2; LEU-16**Application** : WB, IHC-P, ICC/IF, FC, IP**Reactivity** : Human**Host species** : Rabbit**Background**

This gene encodes a member of the membrane-spanning 4A gene family. Members of this nascent protein family are characterized by common structural features and similar intron/exon splice boundaries and display unique expression patterns among hematopoietic cells and nonlymphoid tissues. This gene encodes a B-lymphocyte surface molecule which plays a role in the development and differentiation of B-cells into plasma cells. This family member is localized to 11q12, among a cluster of family members. Alternative splicing of this gene results in two transcript variants which encode the same protein. [provided by RefSeq, Jul 2008]

Immunogen

A synthetic peptide of human CD20

Gene ID

931

Swiss Prot

P11836

Synonyms

B1; S7; Bp35; MS4A1; CVID5; MS4A2; LEU-16

Reactivity

Human

Application

WB, IHC-P, ICC/IF, FC, IP

Recommended dilution

WB: 1:1000-1:5000

IHC-P: 1:50-1:200

ICC/IF: 1:20

FC: 1:100-1:200

IP: 1:20

Calculated MW

33 kDa

Observed MW

33 kDa

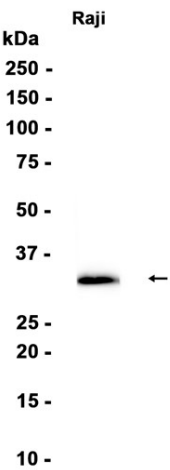
Host species

Rabbit

Clonality

Monoclonal

Clonality No.	DGR11675
Isotype	IgG
Purity	Affinity Purification
Conjugation	Un-conjugated
Storage Stability	Store at -20°C. Supplied in 50mM Tris-Glycine(pH 7.4), 0.15M NaCl, 40% Glycerol, 0.01% sodium azide and 0.05% BSA. Stable for 12 months from date of receipt.



Western blot analysis of extracts from Raji cells using db12572 at 1:1000.