

Recombinant

DGRmAb®

Apolipoprotein L1 (DGR11660) Rabbit mAb

db12574

Package : 10µL 20µL 50µL 100µL

Product Name : Apolipoprotein L1 (DGR11660) Rabbit mAb**Cat.No.:** db12574**Synonyms** : APOL; APO-L; FSGS4; APOL-I**Application** : WB, ICC/IF, FC, IP**Reactivity** : Human**Host species** : Rabbit**Background**

This gene encodes a secreted high density lipoprotein which binds to apolipoprotein A-I. Apolipoprotein A-I is a relatively abundant plasma protein and is the major apoprotein of HDL. It is involved in the formation of most cholesteryl esters in plasma and also promotes efflux of cholesterol from cells. This apolipoprotein L family member may play a role in lipid exchange and transport throughout the body, as well as in reverse cholesterol transport from peripheral cells to the liver. Several different transcript variants encoding different isoforms have been found for this gene. [provided by RefSeq, Nov 2008]

Immunogen

A synthetic peptide of human Apolipoprotein L1

Gene ID

8542

Swiss Prot

O14791

Synonyms

APOL; APO-L; FSGS4; APOL-I

Reactivity

Human

Application

WB, ICC/IF, FC, IP

Recommended dilution

WB: 1:1000-1:5000

ICC/IF: 1:50

FC: 1:10-1:100

IP: 1:10-1:100

Calculated MW

44 kDa

Observed MW

44 kDa

Host species

Rabbit

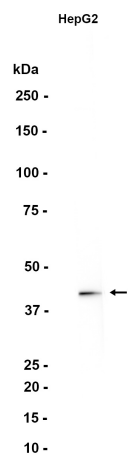
Clonality

Monoclonal

Clonality No.

DGR11660

| | |
|-------------------|---|
| Isotype | IgG |
| Purity | Affinity Purification |
| Conjugation | Un-conjugated |
| Storage Stability | Store at -20°C. Supplied in 50mM Tris-Glycine(pH 7.4), 0.15M NaCl, 40% Glycerol, 0.01% sodium azide and 0.05% BSA. Stable for 12 months from date of receipt. |



Western blot analysis of extracts from HepG2 cells using db12574 at 1:1000.