

Recombinant

DGRmAb®

CD10 (DGR20689) Rabbit mAb

db12783

Package : 10μL 20μL 50μL 100μL

Product Name : CD10 (DGR20689) Rabbit mAb**Cat.No.:** db12783**Synonyms** : NEP; SFE; CD10; CALLA; CMT2T; SCA43**Application** : WB, IHC-P, ICC/IF, IP**Reactivity** : Human,Mouse,Rat**Host species** : Rabbit**Background**

The protein encoded by this gene is a type II transmembrane glycoprotein and a common acute lymphocytic leukemia antigen that is an important cell surface marker in the diagnosis of human acute lymphocytic leukemia (ALL). The encoded protein is present on leukemic cells of pre-B phenotype, which represent 85% of cases of ALL. This protein is not restricted to leukemic cells, however, and is found on a variety of normal tissues. The protein is a neutral endopeptidase that cleaves peptides at the amino side of hydrophobic residues and inactivates several peptide hormones including glucagon, enkephalins, substance P, neurotensin, oxytocin, and bradykinin. [provided by RefSeq, Aug 2017]

Immunogen

A synthetic peptide of human CD10

Gene ID

4311

Swiss Prot

P08473

Synonyms

NEP; SFE; CD10; CALLA; CMT2T; SCA43

Reactivity

Human,Mouse,Rat

Application

WB, IHC-P, ICC/IF, IP

Recommended dilution

WB: 1:1000

IHC-P: 1:200-1:1000

ICC/IF: 1:50

IP: 1:20-1:50

Calculated MW

86 kDa

Observed MW

100 kDa

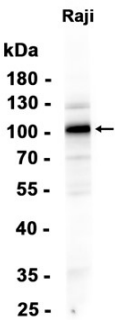
Host species

Rabbit

Clonality

Monoclonal

Clonality No.	DGR20689
Isotype	IgG
Purity	Affinity Purification
Conjugation	Un-conjugated
Storage Stability	Store at -20°C. Supplied in 50mM Tris-Glycine(pH 7.4), 0.15M NaCl, 40% Glycerol, 0.01% sodium azide and 0.05% BSA. Stable for 12 months from date of receipt.



Western blot analysis of extracts from Raji cells using db12783 at 1:1000.