

Recombinant

DGRmAb®

## Apolipoprotein L1 (DGR19669) Rabbit mAb

db12850

Package : 10μL 20μL 50μL 100μL

**Product Name** : Apolipoprotein L1 (DGR19669) Rabbit mAb**Cat.No.:** db12850**Synonyms** : APOL; APO-L; FSGS4; APOL-I**Application** : WB, IHC-P, IP**Reactivity** : Human**Host species** : Rabbit**Background**

This gene encodes a secreted high density lipoprotein which binds to apolipoprotein A-I. Apolipoprotein A-I is a relatively abundant plasma protein and is the major apoprotein of HDL. It is involved in the formation of most cholesteryl esters in plasma and also promotes efflux of cholesterol from cells. This apolipoprotein L family member may play a role in lipid exchange and transport throughout the body, as well as in reverse cholesterol transport from peripheral cells to the liver. Several different transcript variants encoding different isoforms have been found for this gene. [provided by RefSeq, Nov 2008]

**Immunogen**

Recombinant protein of human Apolipoprotein L1

**Gene ID**

8542

**Swiss Prot**

O14791

**Synonyms**

APOL; APO-L; FSGS4; APOL-I

**Reactivity**

Human

**Application**

WB, IHC-P, IP

**Recommended dilution**

WB: 1:1000

IHC-P: 1:200-1:500

IP: 1:20-1:50

**Calculated MW**

44 kDa

**Observed MW**

44 kDa

**Host species**

Rabbit

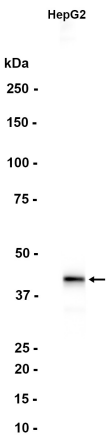
**Clonality**

Monoclonal

**Clonality No.**

DGR19669

Isotype	IgG
Purity	Affinity Purification
Conjugation	Un-conjugated
Storage Stability	Store at -20°C. Supplied in 50mM Tris-Glycine(pH 7.4), 0.15M NaCl, 40% Glycerol, 0.01% sodium azide and 0.05% BSA. Stable for 12 months from date of receipt.



Western blot analysis of extracts from HepG2 cells using db12850 at 1:1000.