

Recombinant

DGRmAb®

Podoplanin/gp36 (DGR16391) Rabbit mAb

db12916

Package : 10µL 20µL 50µL 100µL

Product Name : Podoplanin/gp36 (DGR16391) Rabbit mAb**Cat.No.:** db12916**Synonyms** : T1A; GP36; GP40; Gp38; OTS8; T1A2; T1A; T1A-2; AGGRUS; HT1A-1; PA2.26**Application** : WB, IHC, FC, IP**Reactivity** : Human**Host species** : Rabbit**Background**

This gene encodes a type-I integral membrane glycoprotein with diverse distribution in human tissues. The physiological function of this protein may be related to its mucin-type character. The homologous protein in other species has been described as a differentiation antigen and influenza-virus receptor. The specific function of this protein has not been determined but it has been proposed as a marker of lung injury. Alternatively spliced transcript variants encoding different isoforms have been identified. [provided by RefSeq, Jul 2008]

Immunogen

Recombinant protein of human Podoplanin/gp36

Gene ID

10630

Swiss Prot

Q86YL7

Synonyms

T1A; GP36; GP40; Gp38; OTS8; T1A2; T1A; T1A-2; AGGRUS; HT1A-1; PA2.26

Reactivity

Human

Application

WB, IHC, FC, IP

Recommended dilution

WB: 1:1000

IHC: 1:500-1:2000

FC: 1:1:200-500

IP: 1:20

Calculated MW

17 kDa

Observed MW

36 kDa

Host species

Rabbit

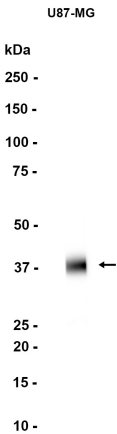
Clonality

Monoclonal

Clonality No.

DGR16391

Isotype	IgG
Purity	Affinity Purification
Conjugation	Un-conjugated
Storage Stability	Store at -20°C. Supplied in 50mM Tris-Glycine(pH 7.4), 0.15M NaCl, 40% Glycerol, 0.01% sodium azide and 0.05% BSA. Stable for 12 months from date of receipt.



Western blot analysis of extracts from U-87 MG cells using db12916 at 1:1000.