

Recombinant

DGRmAb®

muscle Actin (DGR34013) Rabbit mAb

db12998

Package : 10µL 20µL 50µL 100µL

Product Name : muscle Actin (DGR34013) Rabbit mAb**Cat.No.:** db12998**Synonyms** : ACTA; ASMA; CFTD; MPFD; NEM1; NEM2; NEM3; SHPM; CFTD1; CFTDM**Application** : WB, IHC-P**Reactivity** : Human,Mouse,Rat**Host species** : Rabbit**Background**

The product encoded by this gene belongs to the actin family of proteins, which are highly conserved proteins that play a role in cell motility, structure and integrity. Alpha, beta and gamma actin isoforms have been identified, with alpha actins being a major constituent of the contractile apparatus, while beta and gamma actins are involved in the regulation of cell motility. This actin is an alpha actin that is found in skeletal muscle. Mutations in this gene cause a variety of myopathies, including nemaline myopathy, congenital myopathy with excess of thin myofilaments, congenital myopathy with cores, and congenital myopathy with fiber-type disproportion, diseases that lead to muscle fiber defects with manifestations such as hypotonia. [provided by RefSeq, Sep 2019]

Immunogen

A synthetic peptide of human muscle Actin

Gene ID

58

Swiss Prot

P68133

Synonyms

ACTA; ASMA; CFTD; MPFD; NEM1; NEM2; NEM3; SHPM; CFTD1; CFTDM

Reactivity

Human,Mouse,Rat

Application

WB, IHC-P

Recommended dilution

WB: 1:1000-1:5000

IHC-P: 1:100-1:200

Calculated MW

42 kDa

Observed MW

42 kDa

Host species

Rabbit

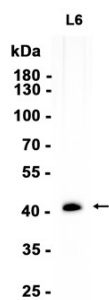
Clonality

Monoclonal

Clonality No.

DGR34013

Isotype	IgG
Purity	Affinity Purification
Conjugation	Un-conjugated
Storage Stability	Store at -20°C. Supplied in 50mM Tris-Glycine(pH 7.4), 0.15M NaCl, 40% Glycerol, 0.01% sodium azide and 0.05% BSA. Stable for 12 months from date of receipt.



Western blot analysis of extracts from L6 cells using db12998 at 1:1000.