

Recombinant

DGRmAb®

Ube2L6 (DGR34011) Rabbit mAb

db12999

Package : 10µL 20µL 50µL 100µL

Product Name : Ube2L6 (DGR34011) Rabbit mAb**Cat.No.:** db12999**Synonyms :** RIG-B; UBCH8**Application :** WB, IHC-P**Reactivity :** Human**Host species :** Rabbit**Background**

The modification of proteins with ubiquitin is an important cellular mechanism for targeting abnormal or short-lived proteins for degradation. Ubiquitination involves at least three classes of enzymes: ubiquitin-activating enzymes (E1s), ubiquitin-conjugating enzymes (E2s) and ubiquitin-protein ligases (E3s). This gene encodes a member of the E2 ubiquitin-conjugating enzyme family. This enzyme is highly similar in primary structure to the enzyme encoded by the UBE2L3 gene. Two alternatively spliced transcript variants encoding distinct isoforms have been found for this gene. [provided by RefSeq, May 2011]

Immunogen

A synthetic peptide of human Ube2L6

Gene ID

9246

Swiss Prot

O14933

Synonyms

RIG-B; UBCH8

Reactivity

Human

Application

WB, IHC-P

Recommended dilution

WB: 1:1000-1:5000

IHC-P: 1:200-1:500

Calculated MW

18 kDa

Observed MW

18 kDa

Host species

Rabbit

Clonality

Monoclonal

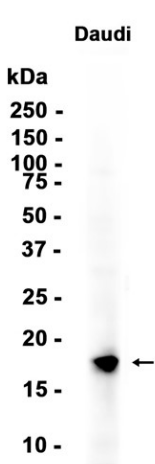
Clonality No.

DGR34011

Isotype

IgG

Purity	Affinity Purification
Conjugation	Un-conjugated
Storage Stability	Store at -20°C. Supplied in 50mM Tris-Glycine(pH 7.4), 0.15M NaCl, 40% Glycerol, 0.01% sodium azide and 0.05% BSA. Stable for 12 months from date of receipt.



Western blot analysis of extracts from Daudi cells using db12999 at 1:1000.