

Recombinant

DGRmAb®

HLA DMB (DGR33579) Rabbit mAb

db13103

Package : 10µL 20µL 50µL 100µL

Product Name : HLA DMB (DGR33579) Rabbit mAb**Cat.No.:** db13103**Synonyms** : RING7; D6S221E**Application** : WB, IHC-P, ICC/IF**Reactivity** : Human**Host species** : Rabbit**Background**

HLA-DMB belongs to the HLA class II beta chain paralogues. This class II molecule is a heterodimer consisting of an alpha (DMA) and a beta (DMB) chain, both anchored in the membrane. It is located in intracellular vesicles. DM plays a central role in the peptide loading of MHC class II molecules by helping to release the CLIP (class II-associated invariant chain peptide) molecule from the peptide binding site. Class II molecules are expressed in antigen presenting cells (APC: B lymphocytes, dendritic cells, macrophages). The beta chain is approximately 26-28 kDa and its gene contains 6 exons. Exon one encodes the leader peptide, exons 2 and 3 encode the two extracellular domains, exon 4 encodes the transmembrane domain and exon 5 encodes the cytoplasmic tail. [provided by RefSeq, Jul 2008]

Immunogen

A synthetic peptide of human HLA DMB

Gene ID

3109

Swiss Prot

P28068

Synonyms

RING7; D6S221E

Reactivity

Human

Application

WB, IHC-P, ICC/IF

Recommended dilution

WB: 1:1000-1:5000

IHC-P: 1:100-1:200

ICC/IF: 1:100-1:500

Calculated MW

29 kDa

Observed MW

29 kDa

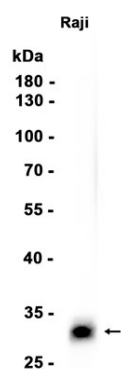
Host species

Rabbit

Clonality

Monoclonal

Clonality No.	DGR33579
Isotype	IgG
Purity	Affinity Purification
Conjugation	Un-conjugated
Storage Stability	Store at -20°C. Supplied in 50mM Tris-Glycine(pH 7.4), 0.15M NaCl, 40% Glycerol, 0.01% sodium azide and 0.05% BSA. Stable for 12 months from date of receipt.



Western blot analysis of extracts from Raji cells using db13103 at 1:1000.