

Recombinant

DGRmAb®

S100 alpha 2/S100A2 (DGR33501) Rabbit mAb

db13132

Package : 10µL 20µL 50µL 100µL

Product Name : S100 alpha 2/S100A2 (DGR33501) Rabbit mAb**Cat.No.:** db13132**Synonyms** : CAN19; S100L**Application** : WB, IHC, ICC/IF, FC, IP**Reactivity** : Human**Host species** : Rabbit**Background**

The protein encoded by this gene is a member of the S100 family of proteins containing 2 EF-hand calcium-binding motifs. S100 proteins are localized in the cytoplasm and/or nucleus of a wide range of cells, and involved in the regulation of a number of cellular processes such as cell cycle progression and differentiation. S100 genes include at least 13 members which are located as a cluster on chromosome 1q21. This protein may have a tumor suppressor function. Chromosomal rearrangements and altered expression of this gene have been implicated in breast cancer.

[provided by RefSeq, Jul 2008]

Immunogen

A synthetic peptide of human S100 alpha 2/S100A2

Gene ID

6273

Swiss Prot

P29034

Synonyms

CAN19; S100L

Reactivity

Human

Application

WB, IHC, ICC/IF, FC, IP

Recommended dilution

WB: 1:1000

IHC: 1:100

ICC/IF: 1:100

FC: 1:20-1:100

IP: 1:20

Calculated MW

11 kDa

Observed MW

11 kDa

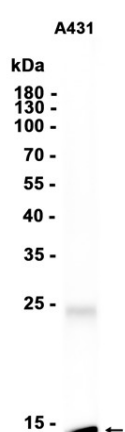
Host species

Rabbit

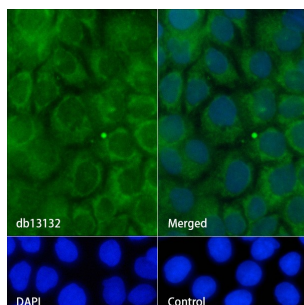
Clonality

Monoclonal

Clonality No.	DGR33501
Isotype	IgG
Purity	Affinity Purification
Conjugation	Un-conjugated
Storage Stability	Store at -20°C. Supplied in 50mM Tris-Glycine(pH 7.4), 0.15M NaCl, 40% Glycerol, 0.01% sodium azide and 0.05% BSA. Stable for 12 months from date of receipt.



Western blot analysis of extracts from A431 cells using db13132 at 1:1000.



Immunofluorescence analysis of A431 cells labelling S100 alpha 2/S100A2 with db13132.

The cells were fixed with cold 100% methanol (10min, 4°C) and blocked in 1% BSA/10% normal goat serum/0.3M glycine in 0.1% PBS-Tween 20 for 1h. The cells were then incubate with db13132 (1:100) at room temprature for 1h, followed by a further incubation at room temperature for 45min with Goat Anti Rabbit IgG (H+L)-AF488 (db10005, shown in green). Nuclear DNA was labeled in blue with DAPI.

Control: Secondary antibody only.