

Recombinant

DGRmAb®

Dishevelled 3 (DGR33455) Rabbit mAb

db13144

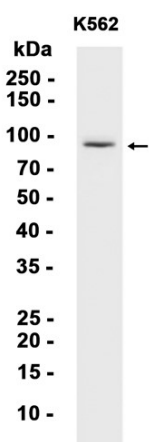
Package : 10µL 20µL 50µL 100µL

Product Name : Dishevelled 3 (DGR33455) Rabbit mAb**Cat.No.:** db13144**Synonyms** : DRS3**Application** : WB, ICC/IF, FC**Reactivity** : Human,Mouse,Rat**Host species** : Rabbit

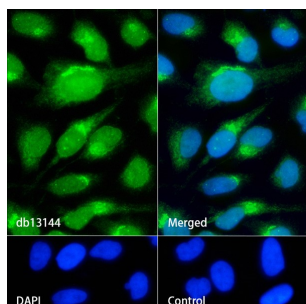
Background	This gene is a member of a multi-gene family which shares strong similarity with the Drosophila dishevelled gene, dsh. The Drosophila dishevelled gene encodes a cytoplasmic phosphoprotein that regulates cell proliferation. [provided by RefSeq, Jul 2008]
Immunogen	A synthetic peptide of human Dishevelled 3
Gene ID	1857
Swiss Prot	Q92997
Synonyms	DRS3
Reactivity	Human,Mouse,Rat
Application	WB, ICC/IF, FC
Recommended dilution	WB: 1:1000 ICC/IF: 1:50 FC: 1:100-1:200
Calculated MW	78 kDa
Observed MW	97 kDa
Host species	Rabbit
Clonality	Monoclonal
Clonality No.	DGR33455
Isotype	IgG
Purity	Affinity Purification
Conjugation	Un-conjugated

Storage Stability

Store at -20°C. Supplied in 50mM Tris-Glycine(pH 7.4), 0.15M NaCl, 40% Glycerol, 0.01% sodium azide and 0.05% BSA. Stable for 12 months from date of receipt.



Western blot analysis of extracts from K562 cells using db13144 at 1:1000.



Immunofluorescence analysis of HeLa cells labelling Dishevelled 3 with db13144.

The cells were fixed with 4% PFA (10min, RT) followed by treatment with 0.1% Triton X-100 (10min, RT), and blocked in 1% BSA/10% normal goat serum/0.3M glycine in 0.1% PBS-Tween 20 for 1h. The cells were then incubate with db13144 (1:50) at room temprature for 1h, followed by a further incubation at room temperature for 45min with Goat Anti Rabbit IgG (H+L)-AF488 (db10005, shown in green). Nuclear DNA was labeled in blue with DAPI.

Control: Secondary antibody only.