

Recombinant

DGRmAb®

## GRK1 (DGR33402) Rabbit mAb

db13164

Package : 10µL 20µL 50µL 100µL

**Product Name :** GRK1 (DGR33402) Rabbit mAb**Cat.No.:** db13164**Synonyms :** GPRK7**Application :** WB**Reactivity :** Human,Mouse,Rat**Host species :** Rabbit**Background**

This gene encodes a member of the guanine nucleotide-binding protein (G protein)-coupled receptor kinase subfamily of the Ser/Thr protein kinase family. It is specifically expressed in the retina and the encoded protein has been shown to phosphorylate cone opsins and initiate their deactivation. [provided by RefSeq, Jul 2008]

**Immunogen**

A synthetic peptide of human GRK1

**Gene ID**

131890

**Swiss Prot**

Q15835

**Synonyms**

GPRK7

**Reactivity**

Human,Mouse,Rat

**Application**

WB

**Recommended dilution**

WB: 1:1000-1:5000

**Calculated MW**

64 kDa

**Observed MW**

64 kDa

**Host species**

Rabbit

**Clonality**

Monoclonal

**Clonality No.**

DGR33402

**Isotype**

IgG

**Purity**

Affinity Purification

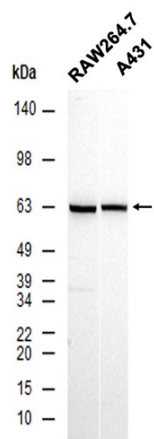
**Conjugation**

Un-conjugated

**Storage Stability**

Store at -20°C. Supplied in 50mM Tris-Glycine(pH 7.4), 0.15M NaCl, 40% Glycerol, 0.01% sodium

azide and 0.05% BSA. Stable for 12 months from date of receipt.



Western blot analysis of extracts from RAW264.7, A431 cells using db13164 at 1:1000.