

Recombinant

DGRmAb®

GAB2 (DGR33398) Rabbit mAb

db13166

Package : 10µL 20µL 50µL 100µL

Product Name : GAB2 (DGR33398) Rabbit mAb**Cat.No.:** db13166**Synonyms :** KIAA0571; GRB2-associated-binding protein 2; GRB2-associated binder 2; Growth factor receptor bound protein 2-associated protein 2; pp100**Application :** WB, ICC/IF**Reactivity :** Human,Mouse,Rat**Host species :** Rabbit**Background**

This gene is a member of the GRB2-associated binding protein (GAB) gene family. These proteins contain pleckstrin homology (PH) domain, and bind SHP2 tyrosine phosphatase and GRB2 adapter protein. They act as adapters for transmitting various signals in response to stimuli through cytokine and growth factor receptors, and T- and B-cell antigen receptors. The protein encoded by this gene is the principal activator of phosphatidylinositol-3 kinase in response to activation of the high affinity IgE receptor. Two alternatively spliced transcripts encoding different isoforms have been described for this gene. [provided by RefSeq, Nov 2009]

Immunogen

A synthetic peptide of human GAB2

Gene ID

9846

Swiss Prot

Q9UQC2

Synonyms

KIAA0571; GRB2-associated-binding protein 2; GRB2-associated binder 2; Growth factor receptor bound protein 2-associated protein 2; pp100

Reactivity

Human,Mouse,Rat

Application

WB, ICC/IF

Recommended dilution

WB: 1:1000-1:5000

ICC/IF: 1:100-1:200

Calculated MW

75 kDa

Observed MW

98 kDa

Host species

Rabbit

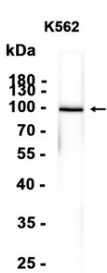
Clonality

Monoclonal

Clonality No.

DGR33398

Isotype	IgG
Purity	Affinity Purification
Conjugation	Un-conjugated
Storage Stability	Store at -20°C. Supplied in 50mM Tris-Glycine(pH 7.4), 0.15M NaCl, 40% Glycerol, 0.01% sodium azide and 0.05% BSA. Stable for 12 months from date of receipt.



Western blot analysis of extracts from K562 cells using db13166 at 1:1000.