

Recombinant

DGRmAb®

## CSPS/STM (DGR33397) Rabbit mAb

db13167

Package : 10µL 20µL 50µL 100µL

**Product Name :** CSPS/STM (DGR33397) Rabbit mAb**Cat.No.:** db13167**Synonyms :** STM; HAST3; M-PST; ST1A3; ST1A4; TL-PST; ST1A3/ST1A4**Application :** WB, IHC-P, ICC/IF**Reactivity :** Human**Host species :** Rabbit**Background**

Sulfotransferase enzymes catalyze the sulfate conjugation of many hormones, neurotransmitters, drugs, and xenobiotic compounds. These cytosolic enzymes are different in their tissue distributions and substrate specificities. The gene structure (number and length of exons) is similar among family members. This gene encodes a phenol sulfotransferase with thermolabile enzyme activity. Four sulfotransferase genes are located on the p arm of chromosome 16, this gene and SULT1A3 arose from a segmental duplication. Read-through transcription exists between this gene and the upstream SLX1B (SLX1 structure-specific endonuclease subunit homolog B) gene that encodes a protein containing GIY-YIG domains. [provided by RefSeq, Nov 2010]

**Immunogen**

A synthetic peptide of human CSPS/STM

**Gene ID**

445329

**Swiss Prot**

P50224

**Synonyms**

STM; HAST3; M-PST; ST1A3; ST1A4; TL-PST; ST1A3/ST1A4

**Reactivity**

Human

**Application**

WB, IHC-P, ICC/IF

**Recommended dilution**

WB: 1:1000-1:5000

IHC-P: 1:200-1:500

ICC/IF: 1:200-1:500

**Calculated MW**

34 kDa

**Observed MW**

34 kDa

**Host species**

Rabbit

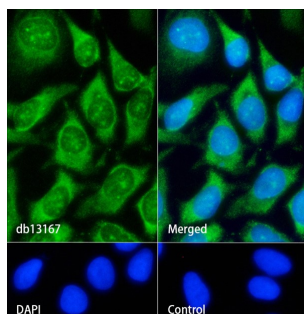
**Clonality**

Monoclonal

**Clonality No.**

DGR33397

Isotype	IgG
Purity	Affinity Purification
Conjugation	Un-conjugated
Storage Stability	Store at -20°C. Supplied in 50mM Tris-Glycine(pH 7.4), 0.15M NaCl, 40% Glycerol, 0.01% sodium azide and 0.05% BSA. Stable for 12 months from date of receipt.



Immunofluorescence analysis of HeLa cells labelling CSPS/STM with db13167.

The cells were fixed with cold 100% methanol (10min, 4°C) and blocked in 1% BSA/10% normal goat serum/0.3M glycine in 0.1% PBS-Tween 20 for 1h. The cells were then incubate with db13167 (1:200) at room temprature for 1h, followed by a further incubation at room temperature for 45min with Goat Anti Rabbit IgG (H+L)-AF488 (db10005, shown in green). Nuclear DNA was labeled in blue with DAPI.

Control: Secondary antibody only.