

Recombinant

DGRmAb®

**CD97 (DGR33387) Rabbit mAb**

db13169

Package : 10µL 20µL 50µL 100µL

**Product Name :** CD97 (DGR33387) Rabbit mAb**Cat.No.:** db13169**Synonyms :** CD97; TM7LN1**Application :** WB, IHC-P, ICC/IF, FC, IP**Reactivity :** Human**Host species :** Rabbit**Background**

This gene encodes a member of the EGF-TM7 subfamily of adhesion G protein-coupled receptors, which mediate cell-cell interactions. These proteins are cleaved by self-catalytic proteolysis into a large extracellular subunit and seven-span transmembrane subunit, which associate at the cell surface as a receptor complex. The encoded protein may play a role in cell adhesion as well as leukocyte recruitment, activation and migration, and contains multiple extracellular EGF-like repeats which mediate binding to chondroitin sulfate and the cell surface complement regulatory protein CD55. Expression of this gene may play a role in the progression of several types of cancer. Alternatively spliced transcript variants encoding multiple isoforms with 3 to 5 EGF-like repeats have been observed for this gene. This gene is found in a cluster with other EGF-TM7 genes on the short arm of chromosome 19. [provided by RefSeq, Jun 2011]

**Immunogen**

A synthetic peptide of human CD97

**Gene ID**

976

**Swiss Prot**

P48960

**Synonyms**

CD97; TM7LN1

**Reactivity**

Human

**Application**

WB, IHC-P, ICC/IF, FC, IP

**Recommended dilution**

WB: 1:1000-1:5000

IHC: 1:200-1:500

ICC/IF: 1:100-1:200

FC: 1:200

IP: 1:20-1:50

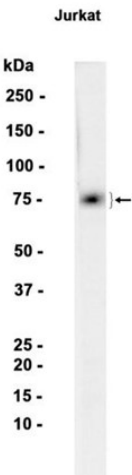
**Calculated MW**

92 kDa

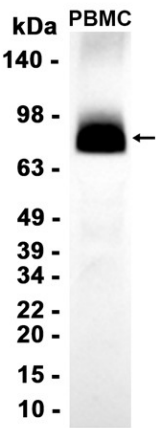
**Observed MW**

92 kDa

Host species	Rabbit
Clonality	Monoclonal
Clonality No.	DGR33387
Isotype	IgG
Purity	Affinity Purification
Conjugation	Un-conjugated
Storage Stability	Store at -20°C. Supplied in 50mM Tris-Glycine(pH 7.4), 0.15M NaCl, 40% Glycerol, 0.01% sodium azide and 0.05% BSA. Stable for 12 months from date of receipt.



Western blot analysis of extracts from Jurkat cells using db13169 at 1:1000.



Western blot analysis of extracts from PBMC cells using db13169 at 1:1000.