

Recombinant

DGRmAb®

MMP20 (DGR33318) Rabbit mAb

db13187

Package : 10µL 20µL 50µL 100µL

Product Name : MMP20 (DGR33318) Rabbit mAb**Cat.No.:** db13187**Synonyms :** AI2A2; MMP-20**Application :** WB**Reactivity :** Human,Mouse,Rat**Host species :** Rabbit**Background**

Proteins of the matrix metalloproteinase (MMP) family are involved in the breakdown of extracellular matrix in normal physiological processes, such as embryonic development, reproduction, and tissue remodeling, as well as in disease processes, such as arthritis and metastasis. Most MMP's are secreted as inactive proproteins which are activated when cleaved by extracellular proteinases. The protein encoded by this gene degrades amelogenin, the major protein component of dental enamel matrix, and thus thought to play a role in tooth enamel formation. A mutation in this gene, which alters the normal splice pattern and results in premature termination of the encoded protein, has been associated with amelogenesis imperfecta. This gene is part of a cluster of MMP genes located on chromosome 11q22.3. [provided by RefSeq, Aug 2011]

Immunogen

A synthetic peptide of human MMP20

Gene ID

9313

Swiss Prot

O60882

Synonyms

AI2A2; MMP-20

Reactivity

Human,Mouse,Rat

Application

WB

Recommended dilution

WB: 1:1000

Calculated MW

54 kDa

Observed MW

54 kDa

Host species

Rabbit

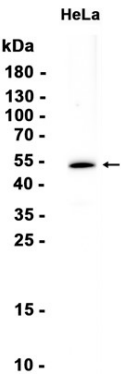
Clonality

Monoclonal

Clonality No.

DGR33318

Isotype	IgG
Purity	Affinity Purification
Conjugation	Un-conjugated
Storage Stability	Store at -20°C. Supplied in 50mM Tris-Glycine(pH 7.4), 0.15M NaCl, 40% Glycerol, 0.01% sodium azide and 0.05% BSA. Stable for 12 months from date of receipt.



Western blot analysis of extracts from HeLa cells using db13187 at 1:1000.