

Recombinant

DGRmAb®

alpha 1 Fetoprotein (DGR33315) Rabbit mAb

db13188

Package : 10µL 20µL 50µL 100µL

Product Name : alpha 1 Fetoprotein (DGR33315) Rabbit mAb**Cat.No.:** db13188**Synonyms** : AFPD; FETA; HPAFP**Application** : WB, IHC, IP**Reactivity** : Human**Host species** : Rabbit**Background**

This gene encodes alpha-fetoprotein, a major plasma protein produced by the yolk sac and the liver during fetal life. Alpha-fetoprotein expression in adults is often associated with hepatocarcinoma and with teratoma, and has prognostic value for managing advanced gastric cancer. However, hereditary persistence of alpha-fetoprotein may also be found in individuals with no obvious pathology. The protein is thought to be the fetal counterpart of serum albumin, and the alpha-fetoprotein and albumin genes are present in tandem in the same transcriptional orientation on chromosome 4. Alpha-fetoprotein is found in monomeric as well as dimeric and trimeric forms, and binds copper, nickel, fatty acids and bilirubin. The level of alpha-fetoprotein in amniotic fluid is used to measure renal loss of protein to screen for spina bifida and anencephaly. [provided by RefSeq, Oct 2019]

Immunogen

A synthetic peptide of human alpha 1 Fetoprotein

Gene ID

174

Swiss Prot

P02771

Synonyms

AFPD; FETA; HPAFP

Reactivity

Human

Application

WB, IHC, IP

Recommended dilution

WB: 1:1000

IHC: 1:100

IP: 1:20

Calculated MW

69 kDa

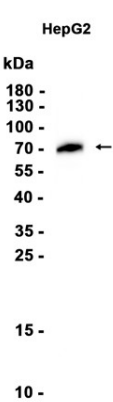
Observed MW

70 kDa

Host species

Rabbit

Clonality	Monoclonal
Clonality No.	DGR33315
Isotype	IgG
Purity	Affinity Purification
Conjugation	Un-conjugated
Storage Stability	Store at -20°C. Supplied in 50mM Tris-Glycine(pH 7.4), 0.15M NaCl, 40% Glycerol, 0.01% sodium azide and 0.05% BSA. Stable for 12 months from date of receipt.



Western blot analysis of extracts from HepG2 cells using db13188 at 1:1000.