

Recombinant

DGRmAb®

Laminin (DGR33312) Rabbit mAb

db13189

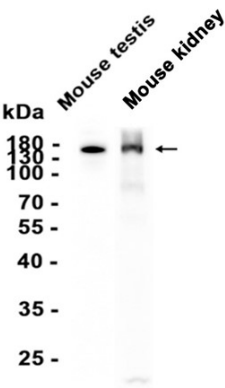
Package : 10µL 20µL 50µL 100µL

Product Name : Laminin (DGR33312) Rabbit mAb**Cat.No.:** db13189**Synonyms** : A1562206; AW240805; 1110064A23Rik**Application** : WB, IHC-P, FC**Reactivity** : Mouse**Host species** : Rabbit

Background	Binding to cells via a high affinity receptor, laminin is thought to mediate the attachment, migration and organization of cells into tissues during embryonic development by interacting with other extracellular matrix components
Immunogen	Recombinant protein of mouse Laminin gamma 3
Gene ID	23928
Swiss Prot	Q9R0B6
Synonyms	A1562206; AW240805; 1110064A23Rik
Reactivity	Mouse
Application	WB, IHC-P, FC
Recommended dilution	WB: 1:1000 IHC-P: 1:200-1:500 FC: 1:20-1:50
Calculated MW	172 kDa
Observed MW	172 kDa
Host species	Rabbit
Clonality	Monoclonal
Clonality No.	DGR33312
Isotype	IgG
Purity	Affinity Purification
Conjugation	Un-conjugated

Storage Stability

Store at -20°C. Supplied in 50mM Tris-Glycine(pH 7.4), 0.15M NaCl, 40% Glycerol, 0.01% sodium azide and 0.05% BSA. Stable for 12 months from date of receipt.



Western blot analysis of extracts from Mouse testis, Mouse kidney tissue using db13189 at 1:1000.