

Recombinant

DGRmAb®

MBD1 (DGR33011) Rabbit mAb

db13278

Package : 10µL 20µL 50µL 100µL

Product Name : MBD1 (DGR33011) Rabbit mAb**Cat.No.:** db13278**Synonyms** : RFT; PCM1; CXXC3**Application** : WB, IHC-P, ICC/IF**Reactivity** : Human**Host species** : Rabbit**Background**

The protein encoded by this gene is a member of a family of nuclear proteins related by the presence of a methyl-CpG binding domain (MBD). These proteins are capable of binding specifically to methylated DNA, and some members can also repress transcription from methylated gene promoters. This protein contains multiple domains: MBD at the N-terminus that functions both in binding to methylated DNA and in protein interactions; several CXXC-type zinc finger domains that mediate binding to non-methylated CpG dinucleotides; transcriptional repression domain (TRD) at the C-terminus that is involved in transcription repression and in protein interactions. Numerous alternatively spliced transcript variants encoding different isoforms have been noted for this gene.[provided by RefSeq, Feb 2011]

Immunogen

A synthetic peptide of human MBD1

Gene ID

4152

Swiss Prot

Q9UIS9

Synonyms

RFT; PCM1; CXXC3

Reactivity

Human

Application

WB, IHC-P, ICC/IF

Recommended dilutionWB: 1:1000
IHC-P: 1:100-1:200
ICC/IF: 1:100-1:200**Calculated MW**

67 kDa

Observed MW

67 kDa

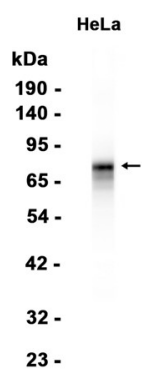
Host species

Rabbit

Clonality

Monoclonal

Clonality No.	DGR33011
Isotype	IgG
Purity	Affinity Purification
Conjugation	Un-conjugated
Storage Stability	Store at -20°C. Supplied in 50mM Tris-Glycine(pH 7.4), 0.15M NaCl, 40% Glycerol, 0.01% sodium azide and 0.05% BSA. Stable for 12 months from date of receipt.



Western blot analysis of extracts from HeLa cells using db13278 at 1:1000.