

Recombinant

DGRmAb®

Mesothelin (DGR13288) Rabbit mAb

db13354

Package : 10µL 20µL 50µL 100µL

Product Name : Mesothelin (DGR13288) Rabbit mAb**Cat.No.:** db13354**Synonyms** : MPF; SMRP**Application** : WB, IHC-P, FC, IP**Reactivity** : Human**Host species** : Rabbit**Background**

This gene encodes a preproprotein that is proteolytically processed to generate two protein products, megakaryocyte potentiating factor and mesothelin. Megakaryocyte potentiating factor functions as a cytokine that can stimulate colony formation of bone marrow megakaryocytes. Mesothelin is a glycosylphosphatidylinositol-anchored cell-surface protein that may function as a cell adhesion protein. This protein is overexpressed in epithelial mesotheliomas, ovarian cancers and in specific squamous cell carcinomas. Alternative splicing results in multiple transcript variants, at least one of which encodes an isoform that is proteolytically processed. [provided by RefSeq, Feb 2016]

Immunogen

Recombinant protein of human Mesothelin

Gene ID

10232

Swiss Prot

Q13421

Synonyms

MPF; SMRP

Reactivity

Human

Application

WB, IHC-P, FC, IP

Recommended dilutionWB: 1:1000
IHC-P: 1:200-1:2000
FC: 1:20-1:50
IP: 1:20-1:50**Calculated MW**

69 kDa

Observed MW

40, 69 kDa

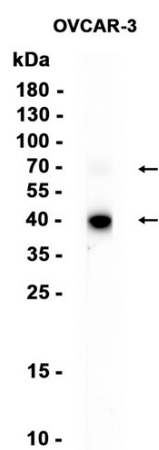
Host species

Rabbit

Clonality

Monoclonal

Clonality No.	DGR13288
Isotype	IgG
Purity	Affinity Purification
Conjugation	Un-conjugated
Storage Stability	Store at -20°C. Supplied in 50mM Tris-Glycine(pH 7.4), 0.15M NaCl, 40% Glycerol, 0.01% sodium azide and 0.05% BSA. Stable for 12 months from date of receipt.



Western blot analysis of extracts from OVCAR-3 cells using db13354 at 1:1000.