

Recombinant

DGRmAb®

Cytokeratin 6 (DGR32690) Rabbit mAb

db13381

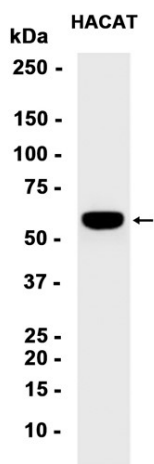
Package : 10µL 20µL 50µL 100µL

Product Name : Cytokeratin 6 (DGR32690) Rabbit mAb**Cat.No.:** db13381**Synonyms** : K6E; KRT6E; PPKNEFD**Application** : WB, IHC-P, ICC/IF**Reactivity** : Human**Host species** : Rabbit

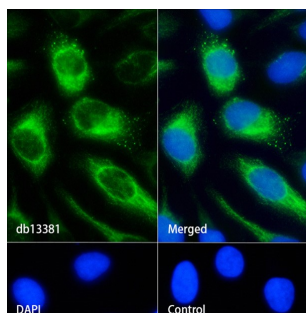
Background	Keratins are intermediate filament proteins responsible for the structural integrity of epithelial cells and are subdivided into epithelial keratins and hair keratins. The type II keratins are clustered in a region of chromosome 12q13. [provided by RefSeq, Jul 2009]
Immunogen	A synthetic peptide of human Cytokeratin 6
Gene ID	286887
Swiss Prot	P02538
Synonyms	K6E; KRT6E; PPKNEFD
Reactivity	Human
Application	WB, IHC-P, ICC/IF
Recommended dilution	WB: 1:1000 IHC-P: 1:50 ICC/IF: 1:50
Calculated MW	60 kDa
Observed MW	60 kDa
Host species	Rabbit
Clonality	Monoclonal
Clonality No.	DGR32690
Isotype	IgG
Purity	Affinity Purification
Conjugation	Un-conjugated

Storage Stability

Store at -20°C. Supplied in 50mM Tris-Glycine(pH 7.4), 0.15M NaCl, 40% Glycerol, 0.01% sodium azide and 0.05% BSA. Stable for 12 months from date of receipt.



Western blot analysis of extracts from HACAT cells using db13381 at 1:1000.



Immunofluorescence analysis of HeLa cells labelling Cytokeratin 6 with db13381.

The cells were fixed with cold 100% methanol (10min, 4°C) and blocked in 1% BSA/10% normal goat serum/0.3M glycine in 0.1% PBS-Tween 20 for 1h. The cells were then incubate with db13381 (1:50) at room temprature for 1h, followed by a further incubation at room temperature for 45min with Goat Anti Rabbit IgG (H+L)-AF488 (db10005, shown in green). Nuclear DNA was labeled in blue with DAPI.

Control: Secondary antibody only.