

Recombinant

DGRmAb®

Biglycan (DGR32673) Rabbit mAb

db13389

Package : 10µL 20µL 50µL 100µL

Product Name : Biglycan (DGR32673) Rabbit mAb**Cat.No.:** db13389**Synonyms** : PGI; MRLS; DSPG1; PG-S1; SEMDX; SLRR1A**Application** : WB, FC**Reactivity** : Human,Mouse,Rat**Host species** : Rabbit**Background**

This gene encodes a member of the small leucine-rich proteoglycan (SLRP) family of proteins. The encoded preproprotein is proteolytically processed to generate the mature protein, which plays a role in bone growth, muscle development and regeneration, and collagen fibril assembly in multiple tissues. This protein may also regulate inflammation and innate immunity. Additionally, the encoded protein may contribute to atherosclerosis and aortic valve stenosis in human patients. This gene and the related gene decorin are thought to be the result of a gene duplication. [provided by RefSeq, Nov 2015]

Immunogen

A synthetic peptide of human Biglycan

Gene ID

633

Swiss Prot

P21810

Synonyms

PGI; MRLS; DSPG1; PG-S1; SEMDX; SLRR1A

Reactivity

Human,Mouse,Rat

Application

WB, FC

Recommended dilution

WB: 1:1000-1:5000

FC: 1:100-1:500

Calculated MW

42 kDa

Observed MW

42 kDa

Host species

Rabbit

Clonality

Monoclonal

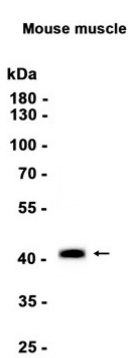
Clonality No.

DGR32673

Isotype

IgG

Purity	Affinity Purification
Conjugation	Un-conjugated
Storage Stability	Store at -20°C. Supplied in 50mM Tris-Glycine(pH 7.4), 0.15M NaCl, 40% Glycerol, 0.01% sodium azide and 0.05% BSA. Stable for 12 months from date of receipt.



Western blot analysis of extracts from Mouse muscle tissue using db13389 at 1:1000.