

Recombinant

DGRmAb®

TGFBI (DGR32303) Rabbit mAb

db13525

Package : 10µL 20µL 50µL 100µL

Product Name : TGFBI (DGR32303) Rabbit mAb

Cat.No.: db13525

Synonyms : CSD; CDB1; CDG2; CSD1; CSD2; CSD3; EBMD; LCD1; BIGH3; CDGG1

Application : WB, IHC-P, ICC/IF

Reactivity : Human,Mouse,Rat

Host species : Rabbit

Background

This gene encodes an RGD-containing protein that binds to type I, II and IV collagens. The RGD motif is found in many extracellular matrix proteins modulating cell adhesion and serves as a ligand recognition sequence for several integrins. This protein plays a role in cell-collagen interactions and may be involved in endochondrial bone formation in cartilage. The protein is induced by transforming growth factor-beta and acts to inhibit cell adhesion. Mutations in this gene are associated with multiple types of corneal dystrophy. [provided by RefSeq, Jul 2008]

Immunogen

A synthetic peptide of human TGFBI

Gene ID

7045

Swiss Prot

Q15582

Synonyms

CSD; CDB1; CDG2; CSD1; CSD2; CSD3; EBMD; LCD1; BIGH3; CDGG1

Reactivity

Human,Mouse,Rat

Application

WB, IHC-P, ICC/IF

Recommended dilution

WB: 1:1000-1:5000

IHC-P: 1:100-1:200

ICC/IF: 1:50-1:100

Calculated MW

54 kDa

Observed MW

70 kDa

Host species

Rabbit

Clonality

Monoclonal

Clonality No.

DGR32303

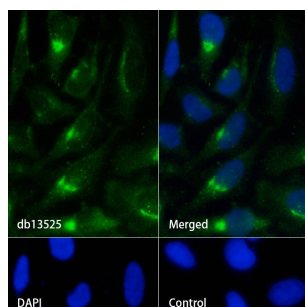
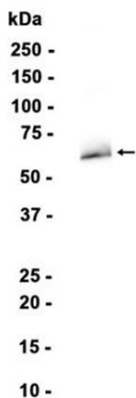
Isotype

IgG

| | |
|--------------------------|---|
| Purity | Affinity Purification |
| Conjugation | Un-conjugated |
| Storage Stability | Store at -20°C. Supplied in 50mM Tris-Glycine(pH 7.4), 0.15M NaCl, 40% Glycerol, 0.01% sodium azide and 0.05% BSA. Stable for 12 months from date of receipt. |

Human fetal kidney

Western blot analysis of extracts from Human fetal kidney tissue using db13525 at 1:1000.



Immunofluorescence analysis of HeLa cells labelling TGFBI with db13525.

The cells were fixed with cold 100% methanol (10min, 4°C) and blocked in 1% BSA/10% normal goat serum/0.3M glycine in 0.1% PBS-Tween 20 for 1h. The cells were then incubate with db13525 (1:50) at room temprature for 1h, followed by a further incubation at room temperature for 45min with Goat Anti Rabbit IgG (H+L)-AF488 (db10005, shown in green). Nuclear DNA was labeled in blue with DAPI.

Control: Secondary antibody only.