

Recombinant

DGRmAb®

Endo G (DGR32129) Rabbit mAb

db13569

Package : 10µL 20µL 50µL 100µL

Product Name : Endo G (DGR32129) Rabbit mAb**Cat.No.:** db13569**Synonyms** : ENDOG; Endonuclease G**Application** : WB**Reactivity** : Human,Mouse,Rat**Host species** : Rabbit**Background**

The protein encoded by this gene is a nuclear encoded endonuclease that is localized in the mitochondrion. The encoded protein is widely distributed among animals and cleaves DNA at GC tracts. This protein is capable of generating the RNA primers required by DNA polymerase gamma to initiate replication of mitochondrial DNA. [provided by RefSeq, Jul 2008]

Immunogen

A synthetic peptide of human Endo G

Gene ID

2021

Swiss Prot

Q14249

Synonyms

ENDOG; Endonuclease G

Reactivity

Human,Mouse,Rat

Application

WB

Recommended dilution

WB: 1:1000-1:5000

Calculated MW

33 kDa

Observed MW

33 kDa

Host species

Rabbit

Clonality

Monoclonal

Clonality No.

DGR32129

Isotype

IgG

Purity

Affinity Purification

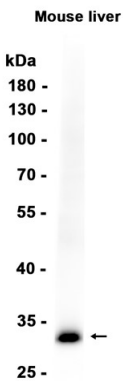
Conjugation

Un-conjugated

Storage Stability

Store at -20°C. Supplied in 50mM Tris-Glycine(pH 7.4), 0.15M NaCl, 40% Glycerol, 0.01% sodium

azide and 0.05% BSA. Stable for 12 months from date of receipt.



Western blot analysis of extracts from Mouse liver tissue using db13569 at 1:1000.