

Recombinant

DGRmAb®

Cyclin A2 (DGR32079) Rabbit mAb

db13588

Package : 10μL 20μL 50μL 100μL

Product Name : Cyclin A2 (DGR32079) Rabbit mAb**Cat.No.:** db13588**Synonyms** : CCN1; CCNA**Application** : WB, ICC/IF, FC, IP**Reactivity** : Human**Host species** : Rabbit

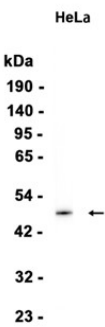
Background	The protein encoded by this gene belongs to the highly conserved cyclin family, whose members function as regulators of the cell cycle. This protein binds and activates cyclin-dependent kinase 2 and thus promotes transition through G1/S and G2/M. [provided by RefSeq, Aug 2016]
Immunogen	A synthetic peptide of human Cyclin A2
Gene ID	890
Swiss Prot	P20248
Synonyms	CCN1; CCNA
Reactivity	Human
Application	WB, ICC/IF, FC, IP
Recommended dilution	WB: 1:1000 ICC/IF: 1:50 FC: 1:20 IP: 1:20
Calculated MW	49 kDa
Observed MW	49 kDa
Host species	Rabbit
Clonality	Monoclonal
Clonality No.	DGR32079
Isotype	IgG
Purity	Affinity Purification

Conjugation

Un-conjugated

Storage Stability

Store at -20°C. Supplied in 50mM Tris-Glycine(pH 7.4), 0.15M NaCl, 40% Glycerol, 0.01% sodium azide and 0.05% BSA. Stable for 12 months from date of receipt.



Western blot analysis of extracts from HeLa cells using db13588 at 1:1000.