

Recombinant

DGRmAb®

## GPCR GPR26 (DGR32009) Rabbit mAb

db13608

Package : 10µL 20µL 50µL 100µL

**Product Name :** GPCR GPR26 (DGR32009) Rabbit mAb**Cat.No.:** db13608**Synonyms :** GPR26**Application :** WB**Reactivity :** Human,Mouse,Rat**Host species :** Rabbit**Background**

This gene encodes a G protein-couple receptor protein. G-protein-coupled receptors are a large family of membrane proteins that are involved in cellular responses to environmental stimuli, neurotransmitters, and hormones. The encoded protein may play a role in neurodegenerative diseases. Epigenetic silencing of this gene has been observed in gliomas. [provided by RefSeq, Sep 2016]

**Immunogen**

A synthetic peptide of human GPCR GPR26

**Gene ID**

2849

**Swiss Prot**

Q8NDV2

**Synonyms**

GPR26

**Reactivity**

Human,Mouse,Rat

**Application**

WB

**Recommended dilution**

WB: 1:1000-1:5000

**Calculated MW**

38 kDa

**Observed MW**

38 kDa

**Host species**

Rabbit

**Clonality**

Monoclonal

**Clonality No.**

DGR32009

**Isotype**

IgG

**Purity**

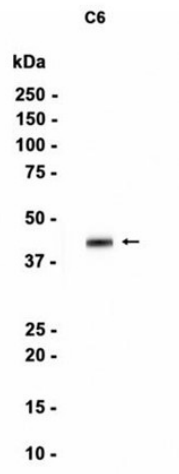
Affinity Purification

**Conjugation**

Un-conjugated

## Storage Stability

Store at -20°C. Supplied in 50mM Tris-Glycine(pH 7.4), 0.15M NaCl, 40% Glycerol, 0.01% sodium azide and 0.05% BSA. Stable for 12 months from date of receipt.



Western blot analysis of extracts from C6 cells using db13608 at 1:1000.