

Recombinant

DGRmAb®

SGK1 (DGR31845) Rabbit mAb

db13635

Package : 10µL 20µL 50µL 100µL

Product Name : SGK1 (DGR31845) Rabbit mAb**Cat.No.:** db13635**Synonyms** : SGK**Application** : WB, IHC-P, FC**Reactivity** : Human,Mouse,Rat**Host species** : Rabbit**Background**

This gene encodes a serine/threonine protein kinase that plays an important role in cellular stress response. This kinase activates certain potassium, sodium, and chloride channels, suggesting an involvement in the regulation of processes such as cell survival, neuronal excitability, and renal sodium excretion. High levels of expression of this gene may contribute to conditions such as hypertension and diabetic nephropathy. Several alternatively spliced transcript variants encoding different isoforms have been noted for this gene. [provided by RefSeq, Jan 2009]

Immunogen

A synthetic peptide of human SGK1

Gene ID

6446

Swiss Prot

O00141

Synonyms

SGK

Reactivity

Human,Mouse,Rat

Application

WB, IHC-P, FC

Recommended dilution

WB: 1:1000

IHC-P: 1:50

FC: 1:20

Calculated MW

49 kDa

Observed MW

49 kDa

Host species

Rabbit

Clonality

Monoclonal

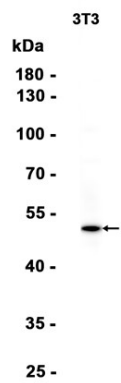
Clonality No.

DGR31845

Isotype

IgG

Purity	Affinity Purification
Conjugation	Un-conjugated
Storage Stability	Store at -20°C. Supplied in 50mM Tris-Glycine(pH 7.4), 0.15M NaCl, 40% Glycerol, 0.01% sodium azide and 0.05% BSA. Stable for 12 months from date of receipt.



Western blot analysis of extracts from 3T3 cells using db13635 at 1:1000.