

Recombinant

DGRmAb®

CD10 (DGR31776) Rabbit mAb

db13649

Package : 10µL 20µL 50µL 100µL

Product Name : CD10 (DGR31776) Rabbit mAb**Cat.No.:** db13649**Synonyms :** NEP; SFE; CD10; CALLA; CMT2T; SCA43**Application :** WB, IHC-P, ICC/IF, IP**Reactivity :** Human,Mouse,Rat**Host species :** Rabbit**Background**

The protein encoded by this gene is a type II transmembrane glycoprotein and a common acute lymphocytic leukemia antigen that is an important cell surface marker in the diagnosis of human acute lymphocytic leukemia (ALL). The encoded protein is present on leukemic cells of pre-B phenotype, which represent 85% of cases of ALL. This protein is not restricted to leukemic cells, however, and is found on a variety of normal tissues. The protein is a neutral endopeptidase that cleaves peptides at the amino side of hydrophobic residues and inactivates several peptide hormones including glucagon, enkephalins, substance P, neurotensin, oxytocin, and bradykinin. [provided by RefSeq, Aug 2017]

Immunogen

Recombinant protein of human CD10

Gene ID

4311

Swiss Prot

P08473

Synonyms

NEP; SFE; CD10; CALLA; CMT2T; SCA43

Reactivity

Human,Mouse,Rat

Application

WB, IHC-P, ICC/IF, IP

Recommended dilution

WB: 1:1000

IHC-P: 1:200-1:500

ICC/IF: 1:200-1:500

IP: 1:20-1:50

Calculated MW

86 kDa

Observed MW

100 kDa

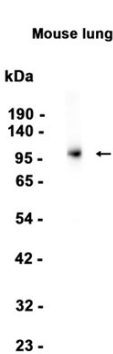
Host species

Rabbit

Clonality

Monoclonal

Clonality No.	DGR31776
Isotype	IgG
Purity	Affinity Purification
Conjugation	Un-conjugated
Storage Stability	Store at -20°C. Supplied in 50mM Tris-Glycine(pH 7.4), 0.15M NaCl, 40% Glycerol, 0.01% sodium azide and 0.05% BSA. Stable for 12 months from date of receipt.



Western blot analysis of extracts from Mouse lung tissue using db13649 at 1:1000.