

Recombinant

DGRmAb®

## Integrin beta 3 (DGR31115) Rabbit mAb

db13857

Package : 10µL 20µL 50µL 100µL

**Product Name** : Integrin beta 3 (DGR31115) Rabbit mAb

**Cat.No.:** db13857

**Synonyms** : GT; CD61; GP3A; BDPLT2; GPIIIa; BDPLT16

**Application** : WB, FC, IP

**Reactivity** : Human,Mouse,Rat

**Host species** : Rabbit

### Background

The ITGB3 protein product is the integrin beta chain beta 3. Integrins are integral cell-surface proteins composed of an alpha chain and a beta chain. A given chain may combine with multiple partners resulting in different integrins. Integrin beta 3 is found along with the alpha IIb chain in platelets. Integrins are known to participate in cell adhesion as well as cell-surface mediated signalling. [provided by RefSeq, Jul 2008]

### Immunogen

A synthetic peptide of human Integrin beta 3

### Gene ID

3690

### Swiss Prot

P05106

### Synonyms

GT; CD61; GP3A; BDPLT2; GPIIIa; BDPLT16

### Reactivity

Human,Mouse,Rat

### Application

WB, FC, IP

### Recommended dilution

WB: 1:1000

FC: 1:20

IP: 1:20

### Calculated MW

87 kDa

### Observed MW

100 kDa

### Host species

Rabbit

### Clonality

Monoclonal

### Clonality No.

DGR31115

### Isotype

IgG

### Purity

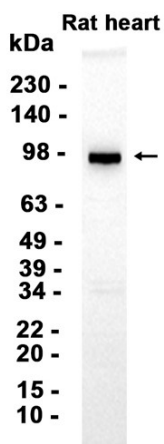
Affinity Purification

**Conjugation**

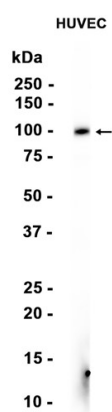
Un-conjugated

**Storage Stability**

Store at -20°C. Supplied in 50mM Tris-Glycine(pH 7.4), 0.15M NaCl, 40% Glycerol, 0.01% sodium azide and 0.05% BSA. Stable for 12 months from date of receipt.



Western blot analysis of extracts from Rat heart tissue using db13857 at 1:1000.



Western blot analysis of extracts from HUVEC cells using db13857 at 1:1000.