

Recombinant

DGRmAb®

Phospho-Smad1 (Ser463/Ser465) (DGR16073) Rabbit mAb

db13936

Package : 10µL 20µL 50µL 100µL

Product Name : Phospho-Smad1 (Ser463/Ser465) (DGR16073) Rabbit mAb**Cat.No.:** db13936**Synonyms** : BSP1; JV41; BSP-1; JV4-1; MADH1; MADR1**Application** : WB, ICC/IF, IP**Reactivity** : Human,Mouse**Host species** : Rabbit**Background**

The protein encoded by this gene belongs to the SMAD, a family of proteins similar to the gene products of the Drosophila gene 'mothers against decapentaplegic' (Mad) and the C. elegans gene Sma. SMAD proteins are signal transducers and transcriptional modulators that mediate multiple signaling pathways. This protein mediates the signals of the bone morphogenetic proteins (BMPs), which are involved in a range of biological activities including cell growth, apoptosis, morphogenesis, development and immune responses. In response to BMP ligands, this protein can be phosphorylated and activated by the BMP receptor kinase. The phosphorylated form of this protein forms a complex with SMAD4, which is important for its function in the transcription regulation. This protein is a target for SMAD-specific E3 ubiquitin ligases, such as SMURF1 and SMURF2, and undergoes ubiquitination and proteasome-mediated degradation. Alternatively spliced transcript variants encoding the same protein have been observed. [provided by RefSeq, Jul 2008]

Immunogen

A synthetic phosphopeptide corresponding to residues surrounding Ser463/Ser465 of human Smad1

Gene ID

4086

Swiss Prot

Q15797

Synonyms

BSP1; JV41; BSP-1; JV4-1; MADH1; MADR1

Reactivity

Human,Mouse

Application

WB, ICC/IF, IP

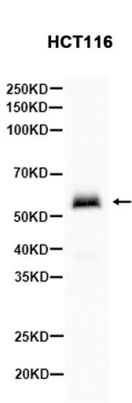
Recommended dilutionWB: 1:1000
ICC/IF: 1:100
IP: 1:20-1:50**Calculated MW**

52 kDa

Observed MW

52 kDa

Host species	Rabbit
Clonality	Monoclonal
Clonality No.	DGR16073
Isotype	IgG
Purity	Affinity Purification
Conjugation	Un-conjugated
Storage Stability	Store at -20°C. Supplied in 50mM Tris-Glycine(pH 7.4), 0.15M NaCl, 40% Glycerol, 0.01% sodium azide and 0.05% BSA. Stable for 12 months from date of receipt.



Western blot analysis of extracts from HCT116 cells using db13936 at 1:1000.