

Recombinant

DGRmAb®

## GBF1 (DGR20890) Rabbit mAb

db14204

Package : 10µL 20µL 50µL 100µL

**Product Name :** GBF1 (DGR20890) Rabbit mAb**Cat.No.:** db14204**Synonyms :** ARF1GEF**Application :** WB, IHC-P, ICC/IF, FC**Reactivity :** Human,Mouse,Rat**Host species :** Rabbit**Background**

This gene encodes a member of the Sec7 domain family. The encoded protein is a guanine nucleotide exchange factor that regulates the recruitment of proteins to membranes by mediating GDP to GTP exchange. The encoded protein is localized to the Golgi apparatus and plays a role in vesicular trafficking by activating ADP ribosylation factor 1. The encoded protein has also been identified as an important host factor for viral replication. Multiple transcript variants have been observed for this gene. [provided by RefSeq, Dec 2010]

**Immunogen**

A synthetic peptide of human GBF1

**Gene ID**

8729

**Swiss Prot**

Q92538

**Synonyms**

ARF1GEF

**Reactivity**

Human,Mouse,Rat

**Application**

WB, IHC-P, ICC/IF, FC

**Recommended dilution**

WB: 1:2000-1:20000

IHC-P: 1:50-1:100

ICC/IF: 1:200-1:500

FC: 1:100-1:200

**Calculated MW**

207 kDa

**Observed MW**

250 kDa

**Host species**

Rabbit

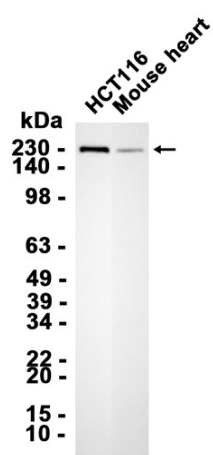
**Clonality**

Monoclonal

**Clonality No.**

DGR20890

|                   |   |
|-------------------|---|
| Isotype           | IgG   |
| Purity            | Affinity Purification   |
| Conjugation       | Un-conjugated   |
| Storage Stability | Store at -20°C. Supplied in 50mM Tris-Glycine(pH 7.4), 0.15M NaCl, 40% Glycerol, 0.01% sodium azide and 0.05% BSA. Stable for 12 months from date of receipt. |



Western blot analysis of extracts from HCT116 cells and Mouse heart tissue using db14204 at 1:5000.