

Recombinant

DGRmAb®

## C4b (DGR20635) Rabbit mAb

db14257

Package : 10µL 20µL 50µL 100µL

**Product Name** : C4b (DGR20635) Rabbit mAb**Cat.No.:** db14257**Synonyms** : CO4; CPAMD3**Application** : WB, IHC-P, ICC/IF**Reactivity** : Human**Host species** : Rabbit**Background**

This gene encodes the basic form of complement factor 4, part of the classical activation pathway. The protein is expressed as a single chain precursor which is proteolytically cleaved into a trimer of alpha, beta, and gamma chains prior to secretion. The trimer provides a surface for interaction between the antigen-antibody complex and other complement components. The alpha chain may be cleaved to release C4 anaphylatoxin, a mediator of local inflammation. Deficiency of this protein is associated with systemic lupus erythematosus. This gene localizes to the major histocompatibility complex (MHC) class III region on chromosome 6. Varying haplotypes of this gene cluster exist, such that individuals may have 1, 2, or 3 copies of this gene. In addition, this gene exists as a long form and a short form due to the presence or absence of a 6.4 kb endogenous HERV-K retrovirus in intron 9. This GeneID and its associated RefSeq record represent a second copy of C4B found on ALT\_REF\_LOCI\_7. [provided by RefSeq, Jul 2011]

**Immunogen**

Recombinant protein of human C4b

**Gene ID**

100293534

**Swiss Prot**

P0C0L5

**Synonyms**

CO4; CPAMD3

**Reactivity**

Human

**Application**

WB, IHC-P, ICC/IF

**Recommended dilution**

WB: 1:1000-1:5000

IHC-P: 1:50-1:100

ICC/IF: 1:100

**Calculated MW**

193 kDa

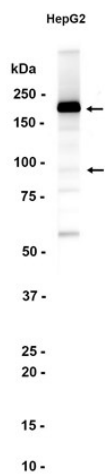
**Observed MW**

193 kDa

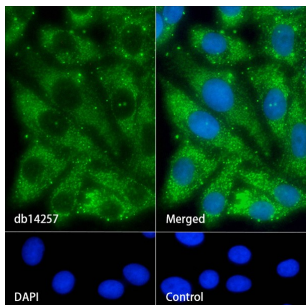
**Host species**

Rabbit

Clonality	Monoclonal
Clonality No.	DGR20635
Isotype	IgG
Purity	Affinity Purification
Conjugation	Un-conjugated
Storage Stability	Store at -20°C. Supplied in 50mM Tris-Glycine(pH 7.4), 0.15M NaCl, 40% Glycerol, 0.01% sodium azide and 0.05% BSA. Stable for 12 months from date of receipt.



Western blot analysis of extracts from HepG2 cells using db14257 at 1:1000.



Immunofluorescence analysis of HepG2 cells labelling C4b with db14257.

The cells were fixed with 4% PFA (10min, RT) followed by treatment with 0.1% Triton X-100 (10min, RT), and blocked in 1% BSA/10% normal goat serum/0.3M glycine in 0.1% PBS-Tween 20 for 1h. The cells were then incubate with db14257 (1:100) at room temprature for 1h, followed by a further incubation at room temperature for 45min with Goat Anti Rabbit IgG (H+L)-AF488 (db10005, shown in green). Nuclear DNA was labeled in blue with DAPI.

Control: Secondary antibody only.