

Recombinant

DGRmAb®

## Clusterin (DGR20512) Rabbit mAb

db14270

Package : 10µL 20µL 50µL 100µL

**Product Name :** Clusterin (DGR20512) Rabbit mAb**Cat.No.:** db14270**Synonyms :** CLI; AAG4; APOJ; CLU1; CLU2; KUB1; SGP2; APO-J; SGP-2; SP-40; TRPM2; TRPM-2; NA1/NA2**Application :** WB, IHC-P**Reactivity :** Human**Host species :** Rabbit**Background**

The protein encoded by this gene is a secreted chaperone that can under some stress conditions also be found in the cell cytosol. It has been suggested to be involved in several basic biological events such as cell death, tumor progression, and neurodegenerative disorders. Alternate splicing results in both coding and non-coding variants.[provided by RefSeq, May 2011]

**Immunogen**

A synthetic peptide of human Clusterin

**Gene ID**

1191

**Swiss Prot**

P10909

**Synonyms**

CLI; AAG4; APOJ; CLU1; CLU2; KUB1; SGP2; APO-J; SGP-2; SP-40; TRPM2; TRPM-2; NA1/NA2

**Reactivity**

Human

**Application**

WB, IHC-P

**Recommended dilution**

WB: 1:1000  
IHC-P: 1:100-1:500

**Calculated MW**

53 kDa

**Observed MW**

35,65 kDa

**Host species**

Rabbit

**Clonality**

Monoclonal

**Clonality No.**

DGR20512

**Isotype**

IgG

**Purity**

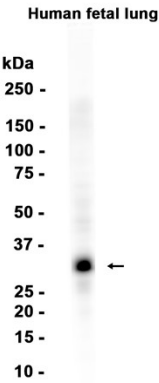
Affinity Purification

**Conjugation**

Un-conjugated

Storage Stability

Store at -20°C. Supplied in 50mM Tris-Glycine(pH 7.4), 0.15M NaCl, 40% Glycerol, 0.01% sodium azide and 0.05% BSA. Stable for 12 months from date of receipt.



Western blot analysis of extracts from Human fetal lung tissue using db14270 at 1:1000.