

Recombinant

DGRmAb®

C1s (DGR20408) Rabbit mAb

db14288

Package : 10µL 20µL 50µL 100µL

Product Name : C1s (DGR20408) Rabbit mAb**Cat.No.:** db14288**Synonyms** : EDSPD2**Application** : WB, IHC, IP**Reactivity** : Human**Host species** : Rabbit**Background**

This gene encodes a serine protease, which is a major constituent of the human complement subcomponent C1. C1s associates with two other complement components C1r and C1q in order to yield the first component of the serum complement system. Defects in this gene are the cause of selective C1s deficiency. [provided by RefSeq, Mar 2009]

Immunogen

A synthetic peptide of human C1s

Gene ID

716

Swiss Prot

P09871

Synonyms

EDSPD2

Reactivity

Human

Application

WB, IHC, IP

Recommended dilution

WB: 1:1000-1:5000

IHC: 1:100-1:200

IP: 1:20

Calculated MW

77 kDa

Observed MW

77 kDa

Host species

Rabbit

Clonality

Monoclonal

Clonality No.

DGR20408

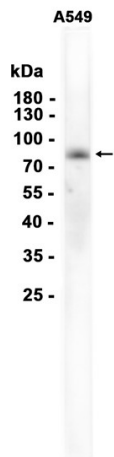
Isotype

IgG

Purity

Affinity Purification

Conjugation	Un-conjugated
Storage Stability	Store at -20°C. Supplied in 50mM Tris-Glycine(pH 7.4), 0.15M NaCl, 40% Glycerol, 0.01% sodium azide and 0.05% BSA. Stable for 12 months from date of receipt.



Western blot analysis of extracts from A549 cells using db14288 at 1:1000.