

Recombinant

DGRmAb®

beta I Tubulin (DGR20367) Rabbit mAb

db14291

Package : 10µL 20µL 50µL 100µL

Product Name : beta I Tubulin (DGR20367) Rabbit mAb**Cat.No.:** db14291**Synonyms** : Tubulin beta-1 chain; TUBB1**Application** : WB, IHC-P, ICC/IF, FC**Reactivity** : Human,Mouse,Rat**Host species** : Rabbit**Background**

This gene encodes a member of the beta tubulin protein family. Beta tubulins are one of two core protein families (alpha and beta tubulins) that heterodimerize and assemble to form microtubules. This protein is specifically expressed in platelets and megakaryocytes and may be involved in proplatelet production and platelet release. A mutations in this gene is associated with autosomal dominant macrothrombocytopenia. Two pseudogenes of this gene are found on chromosome Y. [provided by RefSeq, Jul 2010]

Immunogen

A synthetic peptide of human beta I Tubulin

Gene ID

81027

Swiss Prot

Q9H4B7

Synonyms

Tubulin beta-1 chain; TUBB1

Reactivity

Human,Mouse,Rat

Application

WB, IHC-P, ICC/IF, FC

Recommended dilutionWB: 1:1000
IHC-P: 1:200-1:500
ICC/IF: 1:200-1:500
FC: 1:50-1:100**Calculated MW**

50 kDa

Observed MW

50 kDa

Host species

Rabbit

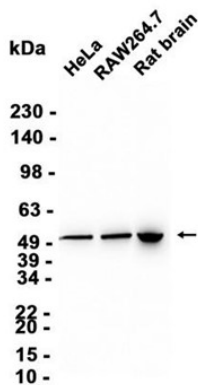
Clonality

Monoclonal

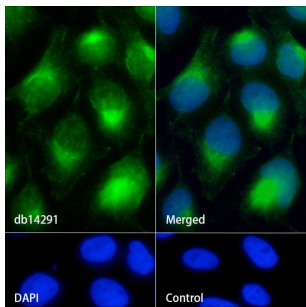
Clonality No.

DGR20367

Isotype	IgG
Purity	Affinity Purification
Conjugation	Un-conjugated
Storage Stability	Store at -20°C. Supplied in 50mM Tris-Glycine(pH 7.4), 0.15M NaCl, 40% Glycerol, 0.01% sodium azide and 0.05% BSA. Stable for 12 months from date of receipt.



Western blot analysis of extracts from RAW264.7, HeLa cells and Rat brain tissue using db14291 at 1:1000.



Immunofluorescence analysis of HeLa cells labelling beta I Tubulin with db14291.

The cells were fixed with 4% PFA (10min, RT) followed by treatment with 0.1% Triton X-100 (10min, RT), and blocked in 1% BSA/10% normal goat serum/0.3M glycine in 0.1% PBS-Tween 20 for 1h. The cells were then incubate with db14291 (1:200) at room temprature for 1h, followed by a further incubation at room temperature for 45min with Goat Anti Rabbit IgG (H+L)-AF488 (db10005, shown in green). Nuclear DNA was labeled in blue with DAPI.

Control: Secondary antibody only.