

Recombinant

DGRmAb®

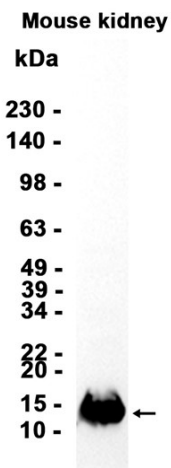
MEF2BNB (DGR20355) Rabbit mAb

db14293

Package : 10µL 20µL 50µL 100µL

Product Name : MEF2BNB (DGR20355) Rabbit mAb**Cat.No.:** db14293**Synonyms** : MEF2BNB**Application** : WB**Reactivity** : Human,Mouse,Rat**Host species** : Rabbit

Background	As part of the BORC complex may play a role in lysosomes movement and localization at the cell periphery. Associated with the cytosolic face of lysosomes, the BORC complex may recruit ARL8B and couple lysosomes to microtubule plus-end-directed kinesin motor.
Immunogen	Recombinant protein of human MEF2BNB
Gene ID	729991
Swiss Prot	Q96FH0
Synonyms	MEF2BNB
Reactivity	Human,Mouse,Rat
Application	WB
Recommended dilution	WB: 1:1000-1:5000
Calculated MW	13 kDa
Observed MW	13 kDa
Host species	Rabbit
Clonality	Monoclonal
Clonality No.	DGR20355
Isotype	IgG
Purity	Affinity Purification
Conjugation	Un-conjugated
Storage Stability	Store at -20°C. Supplied in 50mM Tris-Glycine(pH 7.4), 0.15M NaCl, 40% Glycerol, 0.01% sodium azide and 0.05% BSA. Stable for 12 months from date of receipt.



Western blot analysis of extracts from Mouse kidney tissue using db14293 at 1:1000.