

Recombinant

DGRmAb®

LIME (DGR20270) Rabbit mAb

db14309

Package : 10µL 20µL 50µL 100µL

Product Name : LIME (DGR20270) Rabbit mAb**Cat.No.:** db14309**Synonyms** : LIME; dJ583P15.4**Application** : WB, IHC-P**Reactivity** : Human**Host species** : Rabbit**Background**

This gene encodes a transmembrane adaptor protein that links the T and B-cell receptor stimulation to downstream signaling pathways via its association with the Src family kinases Lck and Lyn, respectively. Alternative splicing of this gene results in multiple transcript variants. [provided by RefSeq, Mar 2015]

Immunogen

Recombinant protein of human LIME

Gene ID

54923

Swiss Prot

Q9H400

Synonyms

LIME; dJ583P15.4

Reactivity

Human

Application

WB, IHC-P

Recommended dilution

WB: 1:1000-1:5000

IHC-P: 1:200-1:2000

Calculated MW

31 kDa

Observed MW

31 kDa

Host species

Rabbit

Clonality

Monoclonal

Clonality No.

DGR20270

Isotype

IgG

Purity

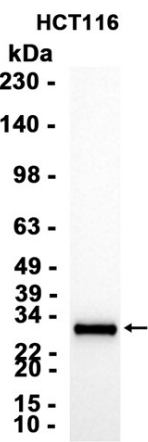
Affinity Purification

Conjugation

Un-conjugated

Storage Stability

Store at -20°C. Supplied in 50mM Tris-Glycine(pH 7.4), 0.15M NaCl, 40% Glycerol, 0.01% sodium azide and 0.05% BSA. Stable for 12 months from date of receipt.



Western blot analysis of extracts from HCT116 cells using db14309 at 1:1000.