

Recombinant

DGRmAb®

Granulin (DGR20239) Rabbit mAb

db14323

Package : 10µL 20µL 50µL 100µL

Product Name : Granulin (DGR20239) Rabbit mAb**Cat.No.:** db14323**Synonyms** : GEP; GP88; PEPI; PGRN; CLN11; PCDGF**Application** : WB, IHC-P, IP**Reactivity** : Human**Host species** : Rabbit**Background**

Granulins are a family of secreted, glycosylated peptides that are cleaved from a single precursor protein with 7.5 repeats of a highly conserved 12-cysteine granulin/epithelin motif. The 88 kDa precursor protein, progranulin, is also called proepithelin and PC cell-derived growth factor. Cleavage of the signal peptide produces mature granulin which can be further cleaved into a variety of active, 6 kDa peptides. These smaller cleavage products are named granulin A, granulin B, granulin C, etc. Epithelins 1 and 2 are synonymous with granulins A and B, respectively. Both the peptides and intact granulin protein regulate cell growth. However, different members of the granulin protein family may act as inhibitors, stimulators, or have dual actions on cell growth. Granulin family members are important in normal development, wound healing, and tumorigenesis. [provided by RefSeq, Jul 2008]

Immunogen

Recombinant protein of human Granulin

Gene ID

2896

Swiss Prot

P28799

Synonyms

GEP; GP88; PEPI; PGRN; CLN11; PCDGF

Reactivity

Human

Application

WB, IHC-P, IP

Recommended dilutionWB: 1:1000
IHC-P: 1:200-1:1000
IP: 1:50-1:100**Calculated MW**

64 kDa

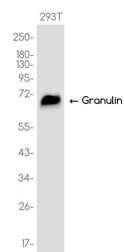
Observed MW

64 kDa

Host species

Rabbit

Clonality	Monoclonal
Clonality No.	DGR20239
Isotype	IgG
Purity	Affinity Purification
Conjugation	Un-conjugated
Storage Stability	Store at -20°C. Supplied in 50mM Tris-Glycine(pH 7.4), 0.15M NaCl, 40% Glycerol, 0.01% sodium azide and 0.05% BSA. Stable for 12 months from date of receipt.



Western blot analysis of extracts from 293T cells using db14323 at 1:1000.