

Recombinant

DGRmAb®

IKK alpha/beta (DGR20221) Rabbit mAb

db14327

Package : 10µL 20µL 50µL 100µL

Product Name : IKK alpha/beta (DGR20221) Rabbit mAb**Cat.No.:** db14327**Synonyms** : IKK1; IKKA; IKBKA; TCF16; NFKB1A; IKK-alpha**Application** : WB, IP**Reactivity** : Human,Mouse,Rat**Host species** : Rabbit**Background**

This gene encodes a member of the serine/threonine protein kinase family. The encoded protein, a component of a cytokine-activated protein complex that is an inhibitor of the essential transcription factor NF-kappa-B complex, phosphorylates sites that trigger the degradation of the inhibitor via the ubiquitination pathway, thereby activating the transcription factor. [provided by RefSeq, Jul 2008]

Immunogen

Recombinant protein of human IKK alpha/beta

Gene ID

1147

Swiss Prot

O14920

Synonyms

IKK1; IKKA; IKBKA; TCF16; NFKB1A; IKK-alpha

Reactivity

Human,Mouse,Rat

Application

WB, IP

Recommended dilutionWB: 1:1000
IP: 1:20-1:50**Calculated MW**

85,87 kDa

Observed MW

85,87 kDa

Host species

Rabbit

Clonality

Monoclonal

Clonality No.

DGR20221

Isotype

IgG

Purity

Affinity Purification

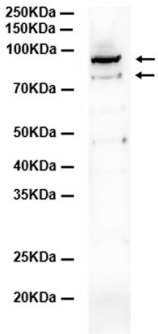
Conjugation

Un-conjugated

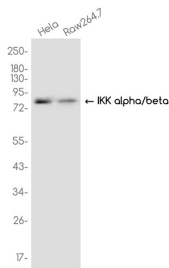
Storage Stability

Store at -20°C. Supplied in 50mM Tris-Glycine(pH 7.4), 0.15M NaCl, 40% Glycerol, 0.01% sodium azide and 0.05% BSA. Stable for 12 months from date of receipt.

Mouse kidney



Western blot analysis of extracts from Mouse kidney tissue using db14327 at 1:1000.



Western blot analysis of extracts from HeLa, RAW264.7 cells using db14327 at 1:1000.