

Recombinant

DGRmAb®

GAB1 (DGR20156) Rabbit mAb

db14349

Package : 10µL 20µL 50µL 100µL

Product Name : GAB1 (DGR20156) Rabbit mAb**Cat.No.:** db14349**Synonyms :** GRB2-associated-binding protein 1; GRB2-associated binder 1; Growth factor receptor bound protein 2-associated protein 1**Application :** WB, IP**Reactivity :** Human**Host species :** Rabbit**Background**

The protein encoded by this gene is a member of the IRS1-like multisubstrate docking protein family. It is an important mediator of branching tubulogenesis and plays a central role in cellular growth response, transformation and apoptosis. Two transcript variants encoding different isoforms have been found for this gene. [provided by RefSeq, Aug 2008]

Immunogen

A synthetic peptide of human GAB1

Gene ID

2549

Swiss Prot

Q13480

Synonyms

GRB2-associated-binding protein 1; GRB2-associated binder 1; Growth factor receptor bound protein 2-associated protein 1

Reactivity

Human

Application

WB, IP

Recommended dilution

WB: 1:1000-1:5000

IP: 1:10-1:100

Calculated MW

77 kDa

Observed MW

110 kDa

Host species

Rabbit

Clonality

Monoclonal

Clonality No.

DGR20156

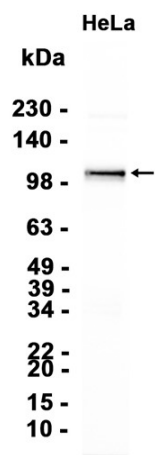
Isotype

IgG

Purity

Affinity Purification

Conjugation	Un-conjugated
Storage Stability	Store at -20°C. Supplied in 50mM Tris-Glycine(pH 7.4), 0.15M NaCl, 40% Glycerol, 0.01% sodium azide and 0.05% BSA. Stable for 12 months from date of receipt.



Western blot analysis of extracts from HeLa cells using db14349 at 1:1000.