

Recombinant

DGRmAb®

## Cyp26B1 (DGR20122) Rabbit mAb

db14359

Package : 10µL 20µL 50µL 100µL

**Product Name :** Cyp26B1 (DGR20122) Rabbit mAb**Cat.No.:** db14359**Synonyms :** RHFCA; CYP26A2; P450RAI2; P450RAI-2**Application :** WB, FC**Reactivity :** Human,Mouse,Rat**Host species :** Rabbit**Background**

This gene encodes a member of the cytochrome P450 superfamily. The cytochrome P450 proteins are monooxygenases which catalyze many reactions involved in drug metabolism and synthesis of cholesterol, steroids and other lipids. The encoded protein is localized to the endoplasmic reticulum, and functions as a critical regulator of all-trans retinoic acid levels by the specific inactivation of all-trans retinoic acid to hydroxylated forms. Mutations in this gene are associated with radiohumeral fusions and other skeletal and craniofacial anomalies, and increased levels of the encoded protein are associated with atherosclerotic lesions. Alternative splicing results in multiple transcript variants. [provided by RefSeq, Apr 2013]

**Immunogen**

Recombinant protein of human Cyp26B1

**Gene ID**

56603

**Swiss Prot**

Q9NR63

**Synonyms**

RHFCA; CYP26A2; P450RAI2; P450RAI-2

**Reactivity**

Human,Mouse,Rat

**Application**

WB, FC

**Recommended dilution**

WB: 1:1000-1:5000

FC: 1:100

**Calculated MW**

58 kDa

**Observed MW**

58 kDa

**Host species**

Rabbit

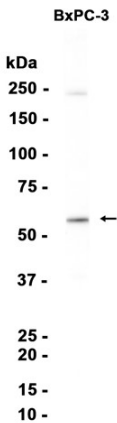
**Clonality**

Monoclonal

**Clonality No.**

DGR20122

Isotype	IgG
Purity	Affinity Purification
Conjugation	Un-conjugated
Storage Stability	Store at -20°C. Supplied in 50mM Tris-Glycine(pH 7.4), 0.15M NaCl, 40% Glycerol, 0.01% sodium azide and 0.05% BSA. Stable for 12 months from date of receipt.



Western blot analysis of extracts from BxPC-3 cells using db14359 at 1:1000.