

Recombinant

DGRmAb®

## EVPL (DGR20030) Rabbit mAb

db14374

Package : 10µL 20µL 50µL 100µL

**Product Name** : EVPL (DGR20030) Rabbit mAb**Cat.No.:** db14374**Synonyms** : EVPK**Application** : WB, IHC-P, FC**Reactivity** : Human**Host species** : Rabbit**Background**

This gene encodes a member of the plakin family of proteins that forms a component of desmosomes and the epidermal cornified envelope. This gene is located in the tylosis oesophageal cancer locus on chromosome 17q25, and its deletion is associated with both familial and sporadic forms of oesophageal squamous cell carcinoma. Patients suffering from the autoimmune mucocutaneous disorder, paraneoplastic pemphigus, develop antibodies against the encoded protein. [provided by RefSeq, Jul 2016]

**Immunogen**

Recombinant protein of human EVPL

**Gene ID**

2125

**Swiss Prot**

Q92817

**Synonyms**

EVPK

**Reactivity**

Human

**Application**

WB, IHC-P, FC

**Recommended dilution**

WB: 1:1000-1:5000

IHC-P: 1:200-1:1000

FC: 1:100

**Calculated MW**

232 kDa

**Observed MW**

232 kDa

**Host species**

Rabbit

**Clonality**

Monoclonal

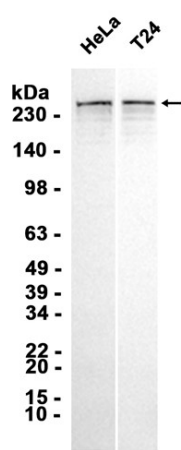
**Clonality No.**

DGR20030

**Isotype**

IgG

Purity	Affinity Purification
Conjugation	Un-conjugated
Storage Stability	Store at -20°C. Supplied in 50mM Tris-Glycine(pH 7.4), 0.15M NaCl, 40% Glycerol, 0.01% sodium azide and 0.05% BSA. Stable for 12 months from date of receipt.



Western blot analysis of extracts from HeLa, T24 cells using db14374 at 1:1000.