

Recombinant

DGRmAb®

**KLF10 (DGR20024) Rabbit mAb**

db14377

Package : 10µL 20µL 50µL 100µL

**Product Name** : KLF10 (DGR20024) Rabbit mAb**Cat.No.:** db14377**Synonyms** : EGRA; TIEG; TIEG1; EGR-alpha**Application** : WB**Reactivity** : Human,Mouse,Rat**Host species** : Rabbit**Background**

This gene encodes a member of a family of proteins that feature C2H2-type zinc finger domains. The encoded protein is a transcriptional repressor that acts as an effector of transforming growth factor beta signaling. Activity of this protein may inhibit the growth of cancers, particularly pancreatic cancer. Alternative splicing results in multiple transcript variants. [provided by RefSeq, Jun 2013]

**Immunogen**

A synthetic peptide of human KLF10

**Gene ID**

7071

**Swiss Prot**

Q13118

**Synonyms**

EGRA; TIEG; TIEG1; EGR-alpha

**Reactivity**

Human,Mouse,Rat

**Application**

WB

**Recommended dilution**

WB: 1:1000-1:5000

**Calculated MW**

53 kDa

**Observed MW**

53 kDa

**Host species**

Rabbit

**Clonality**

Monoclonal

**Clonality No.**

DGR20024

**Isotype**

IgG

**Purity**

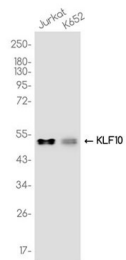
Affinity Purification

**Conjugation**

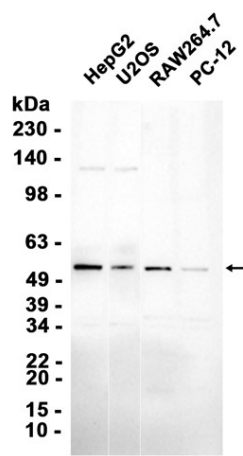
Un-conjugated

Storage Stability

Store at -20°C. Supplied in 50mM Tris-Glycine(pH 7.4), 0.15M NaCl, 40% Glycerol, 0.01% sodium azide and 0.05% BSA. Stable for 12 months from date of receipt.



Western blot analysis of extracts from Jurkat, K562 cells using db14377 at 1:1000.



Western blot analysis of extracts from HepG2, U2OS, RAW264.7, PC-12 cells using db14377 at 1:1000.